



Burnt Creek Loop Flood Mitigation

***Burleigh County Water Resource District
Public Informational Meeting
5-29-2013 – 5:30 pm***





Sandy River Drive Flood Mitigation

*Burleigh County Water Resource District
Public Informational Meeting
5-29-2013 – 7:00 pm*



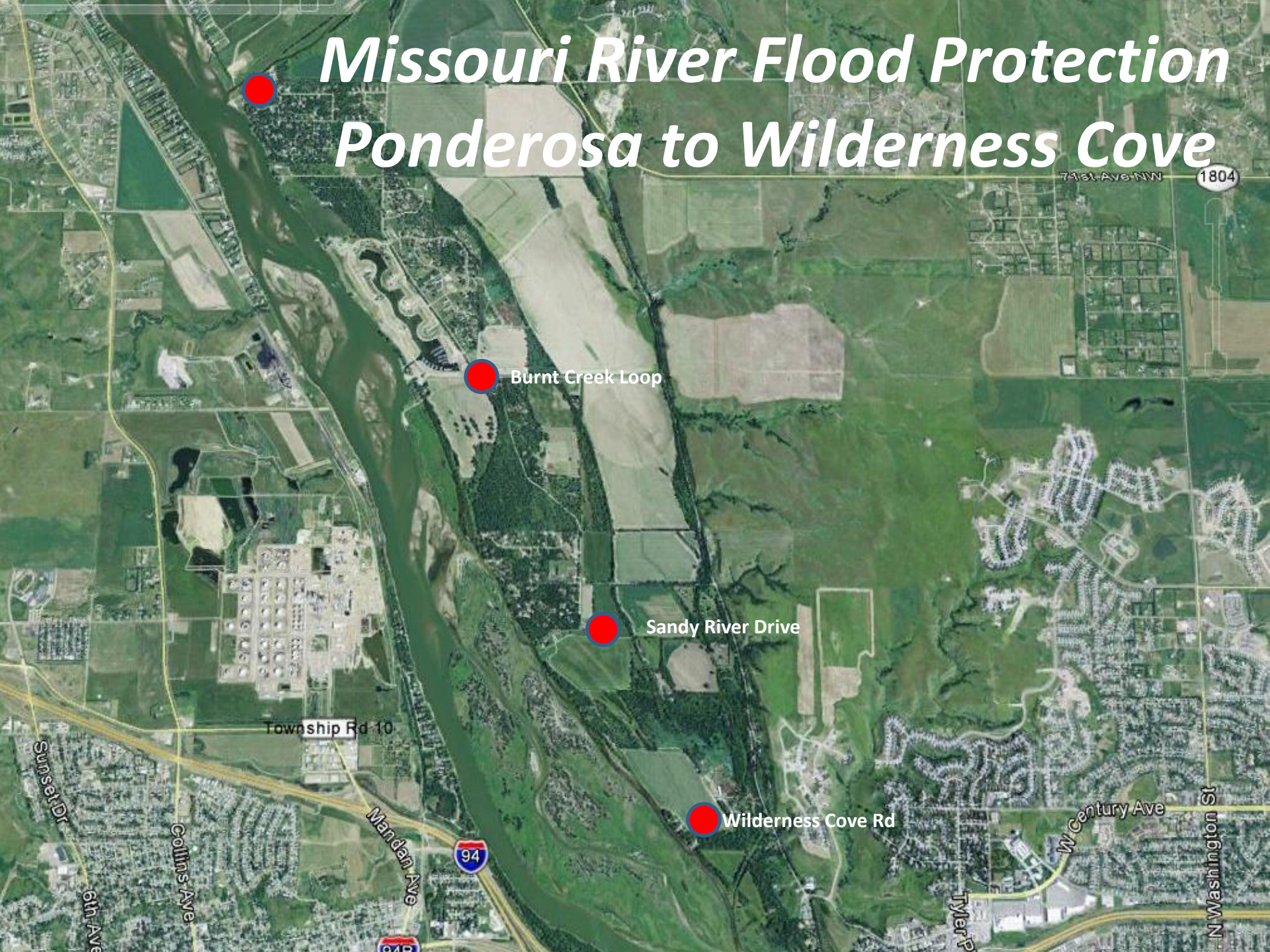


Meeting Purpose

Review flood protection measures that have been discussed, those under development, those being constructed, and those to be evaluated.



Missouri River Flood Protection Ponderosa to Wilderness Cove



Burnt Creek Loop

Sandy River Drive

Wilderness Cove Rd

Township Rd 10

Mandan Ave

W Century Ave

N Washington St

71st Ave NW

1804

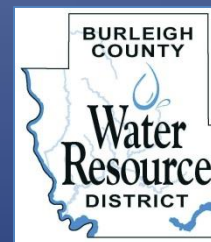
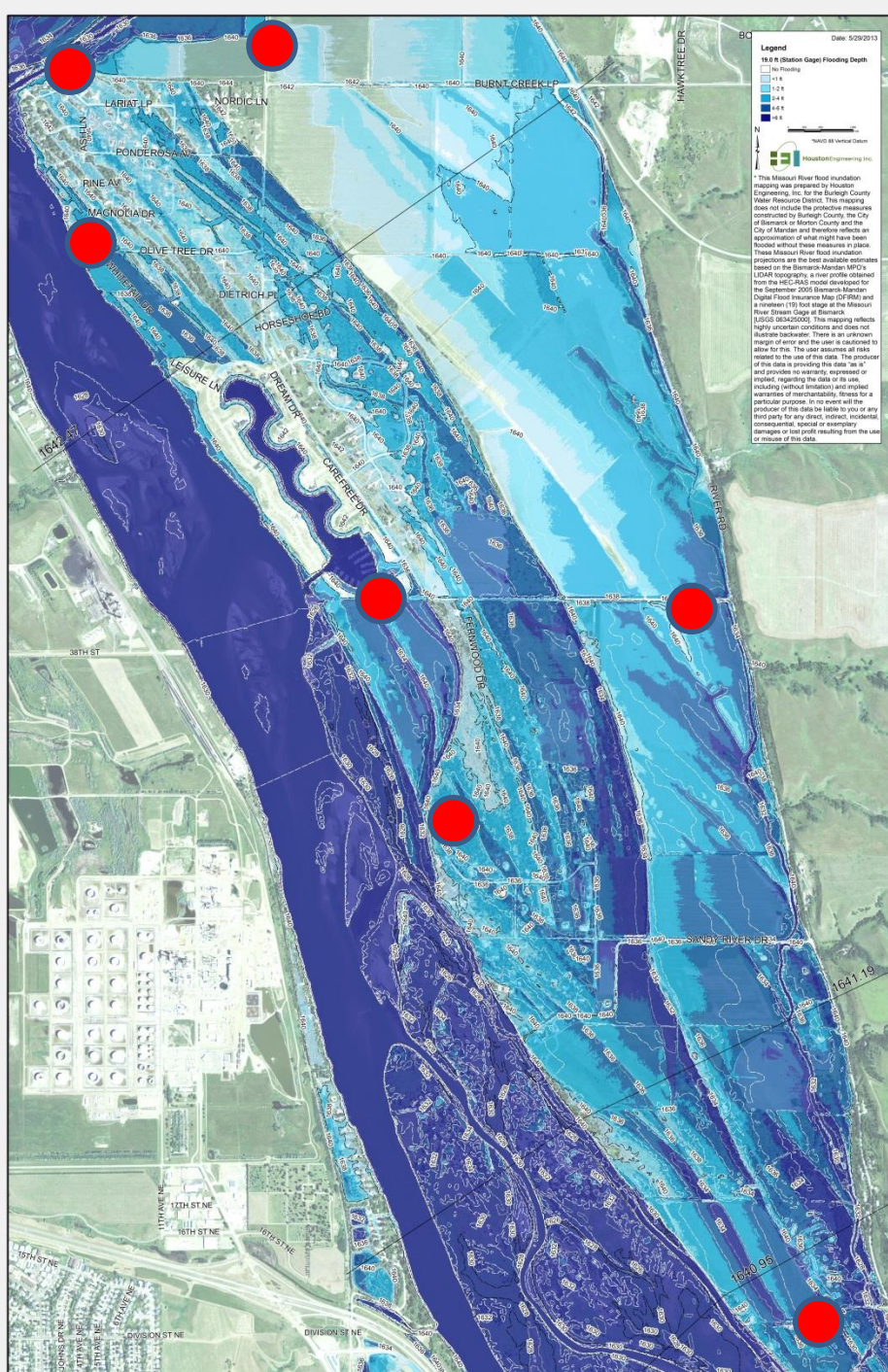
94

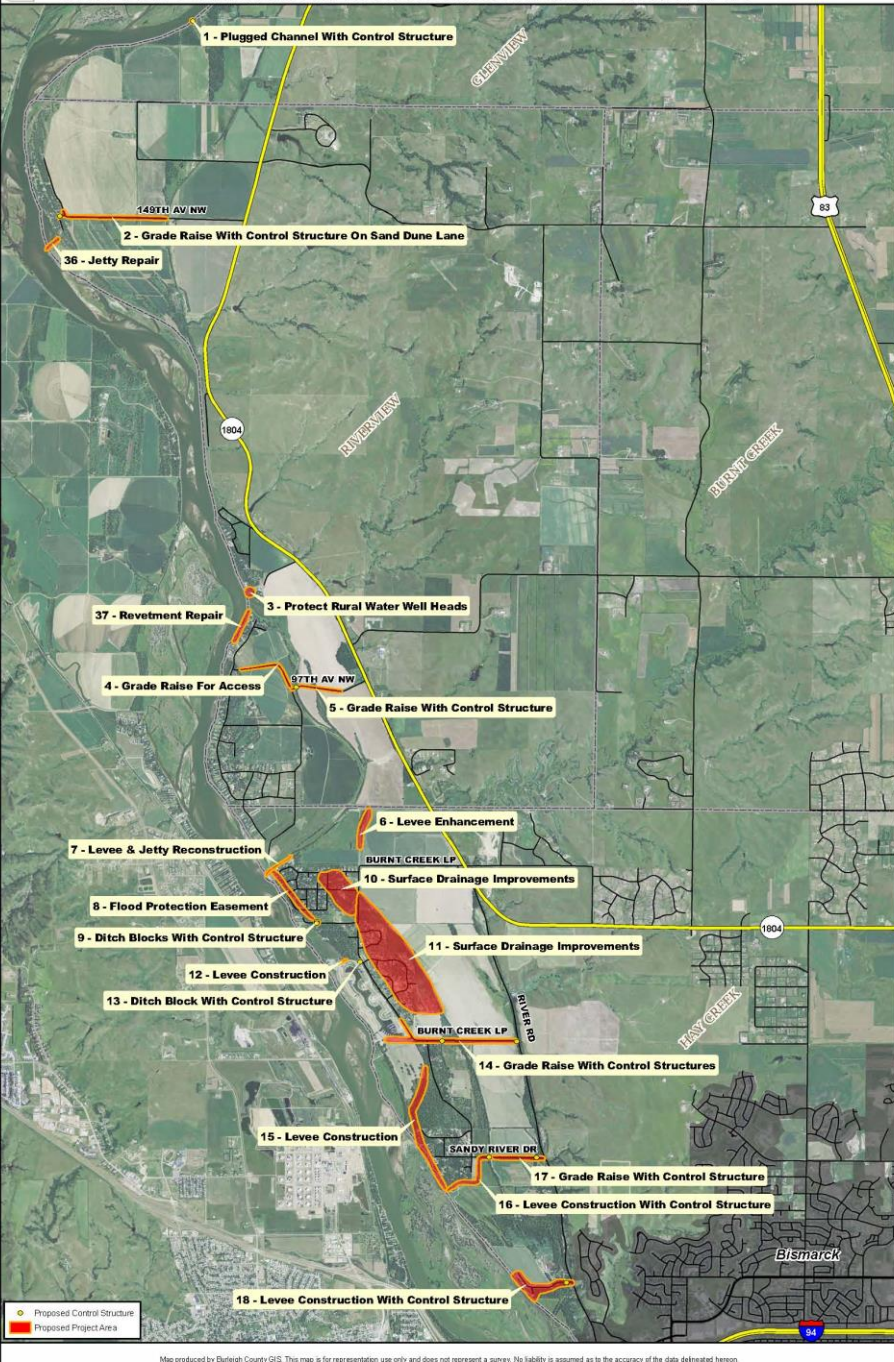
94B

Missouri River 2011 Flood Event

➤ Floodwater Entry

- ✓ Burnt Creek Overflows
- ✓ Ag Levee Overtopping
- ✓ Olive Tree – ROW Ditches
- ✓ Natural low areas along river
- ✓ Misty Waters Overflow
- ✓ Backwaters
 - ✓ Culvert Restrictions
 - ✓ Function of Time (slow)





Burleigh County 20 Foot Protection Plan North Side Measures Initial Proposals

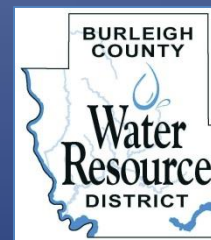
Proposed Control Structure

Proposed Project Area Lead Agency

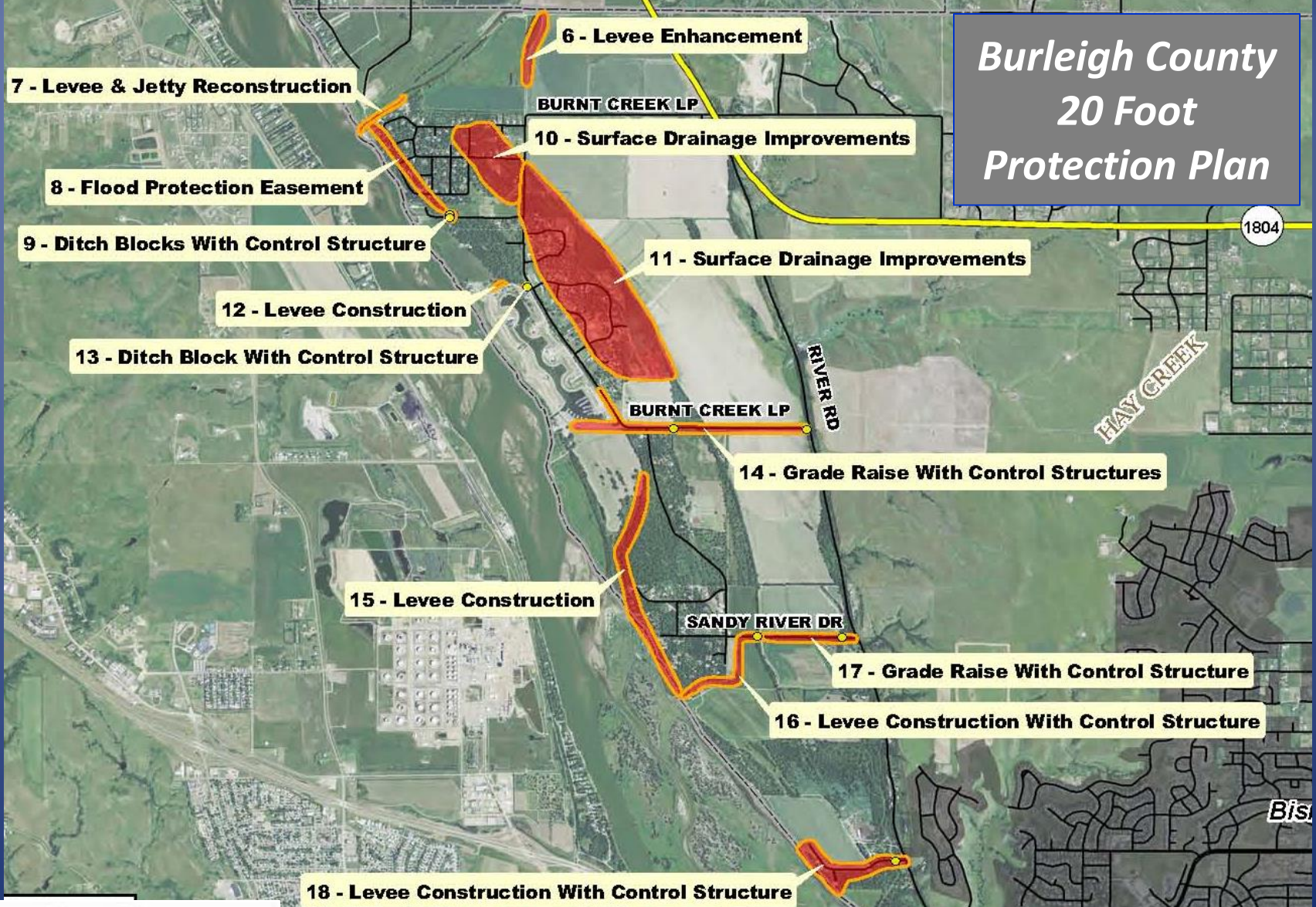
Highway Department

Water Resource District

Other



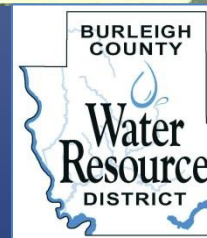
Burleigh County 20 Foot Protection Plan



● Proposed Control Structure

Proposed Project Area Lead Agency

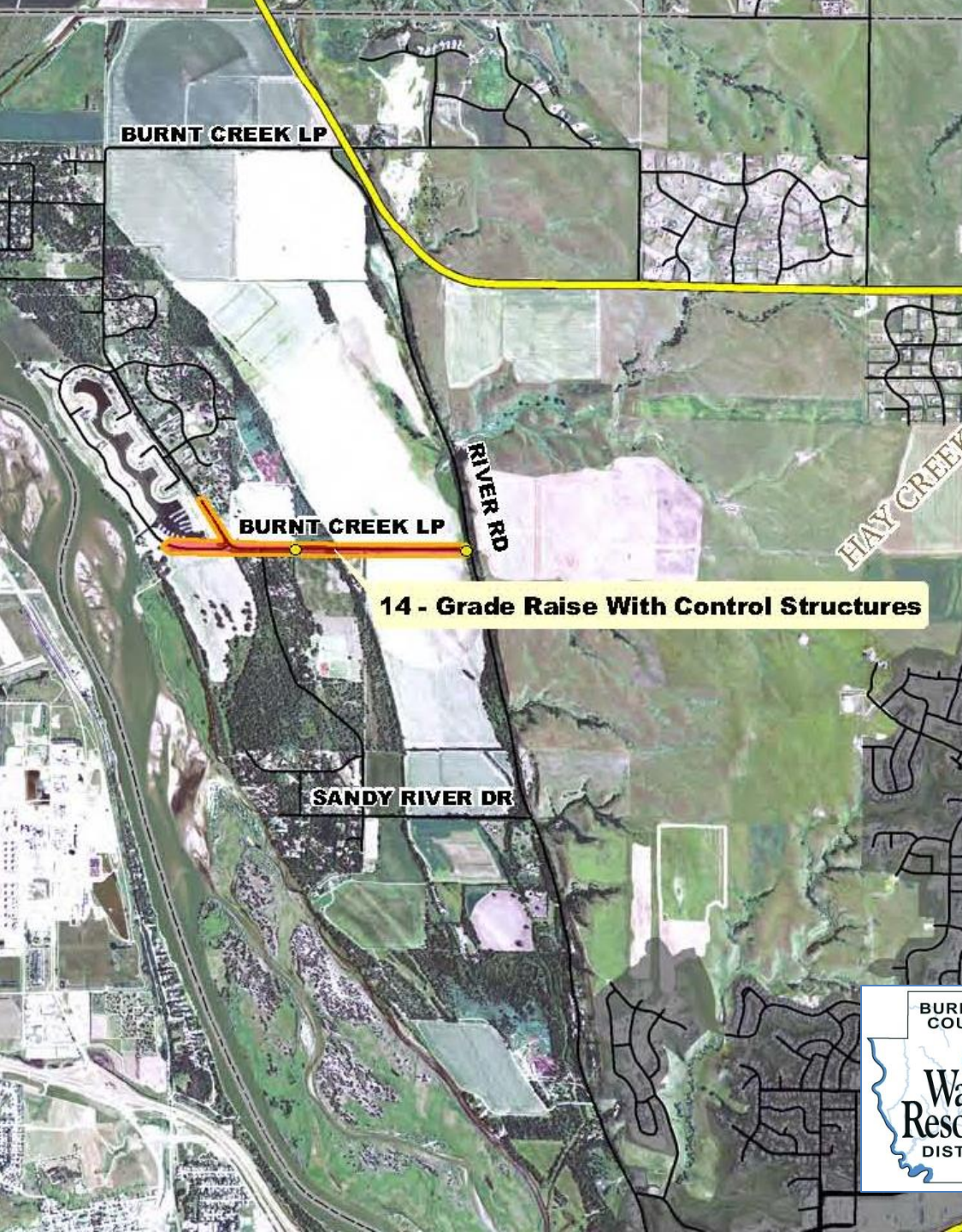
- Highway Department
- Water Resource District
- Other



Burleigh County 20 Foot Protection Plan

- #14 – Burnt Creek Loop Grade Raise (2013)
Cost ~ \$1.5 Million
- #17 -Sandy River Drive Grade Raise (2014)
Cost ~ 1.0 Million

Construction Update from County Engineer



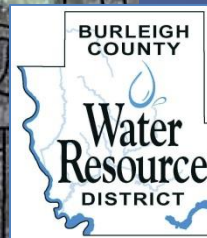
● Proposed Control Structure

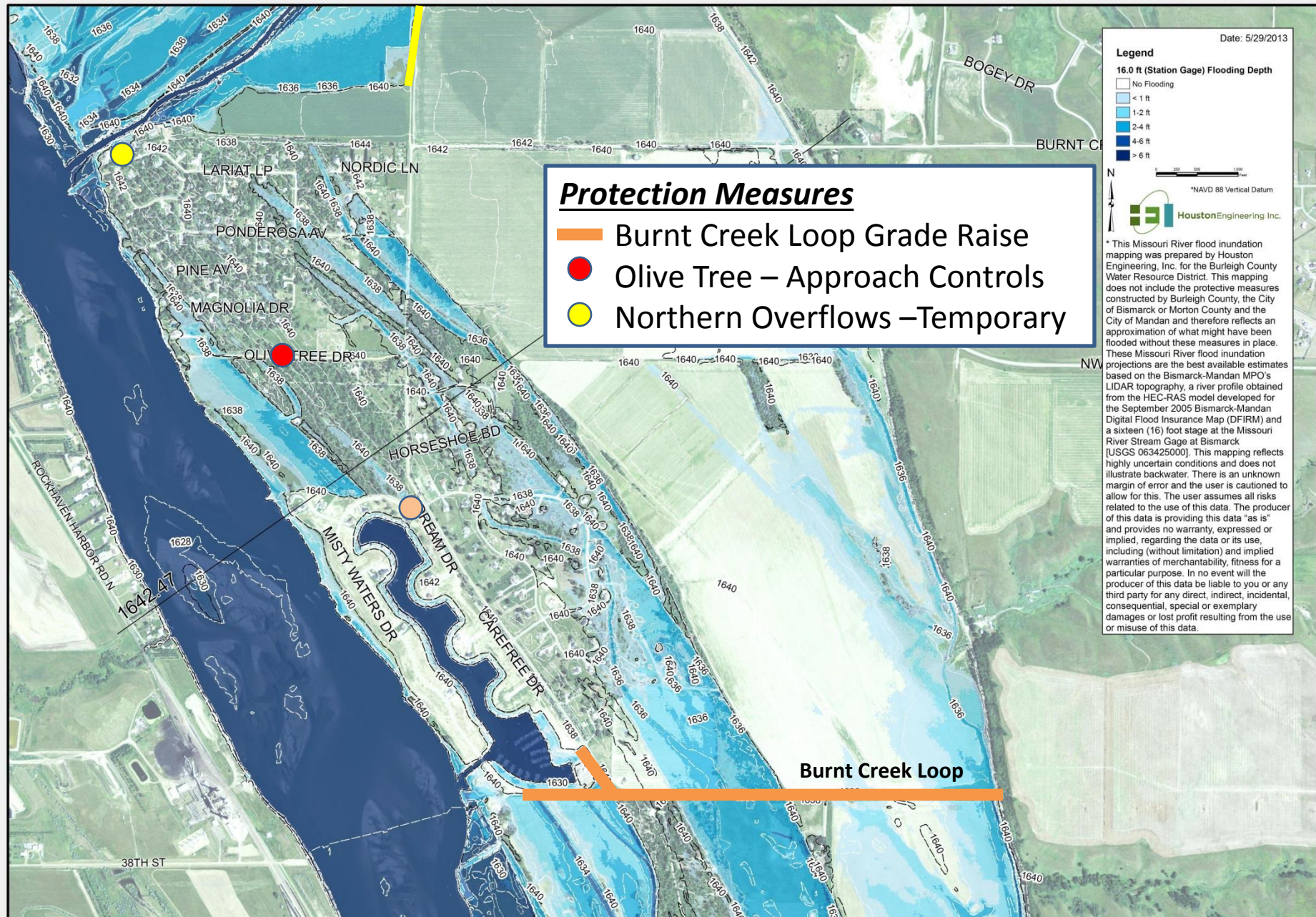
Proposed Project Area Lead Agency

Highway Department

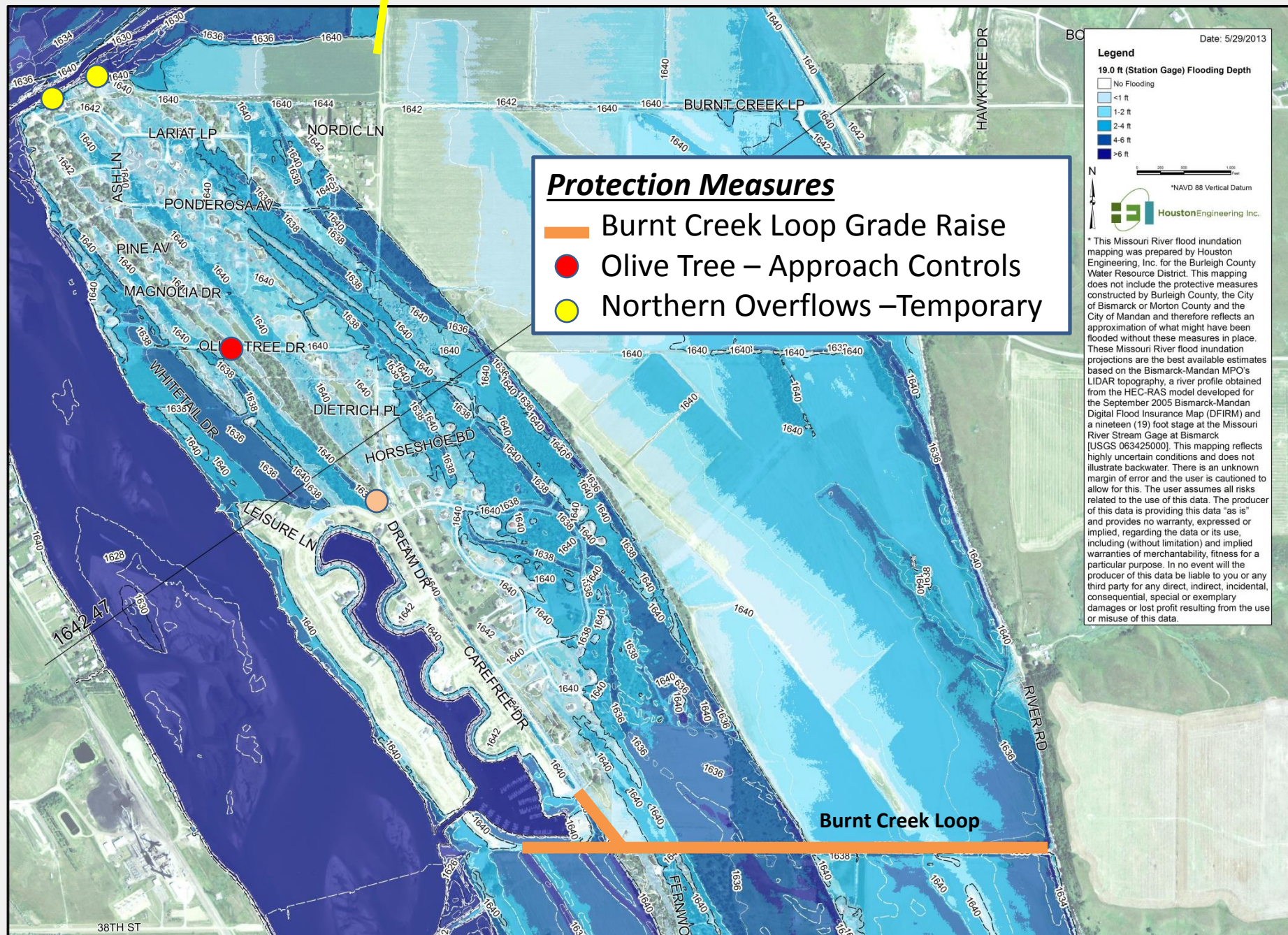
Water Resource District

Other





Stage 16 Feet

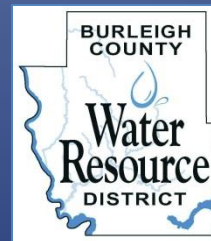


Stage 19 Feet

Sandy River Drive

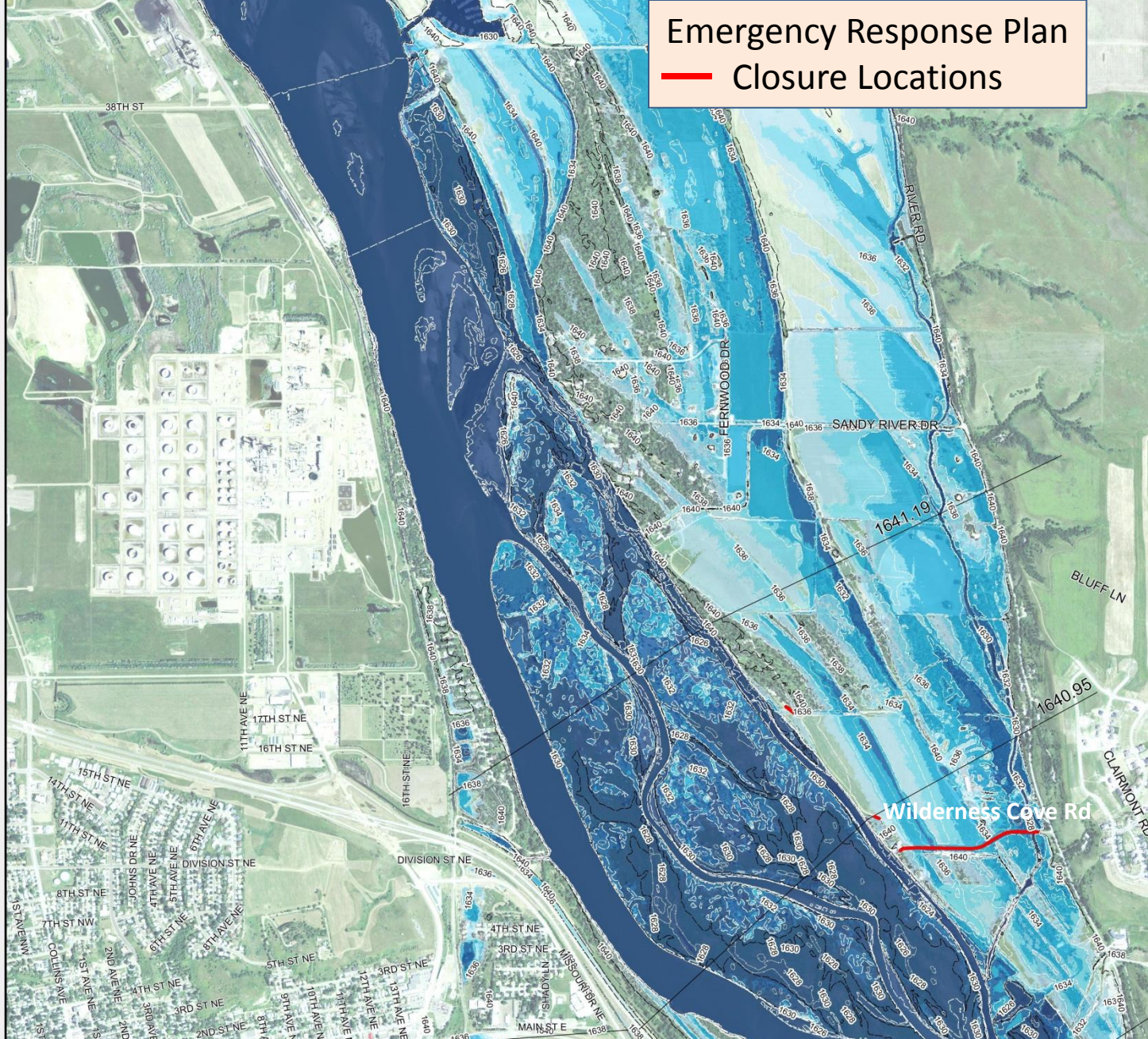
Protection South of Burnt Boat Loop

- Passive Flood Protection (Non Structural)
- Develop **Emergency Response Plan**
 - Identify Required Points of Closure
 - Identify Actions Required at Various River Stages
 - Identify & Quantify Required Resources
 - Local Project Sponsor (Residents)
 - Burleigh County's Role (Emergency Management Plan)
 - BCWRD Role (**ERP** Development)
- Advantage – Low Cost
 - Resource Planning (Timing)
 - Material Staging



Emergency Response Plan

Closure Locations



Stage 16 Feet

Emergency Response Plan

Closure Locations

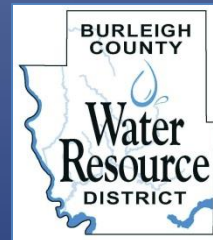


Stage 19 Feet

Sandy River Drive

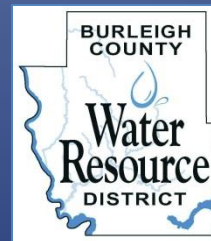
Protection South of Burnt Creek Loop

- Passive Flood Protection (Non Structural)
- Develop **Emergency Response Plan**
 - Identify Required Points of Closure
 - Identify Actions Required at Various River Stages
 - Identify & Quantify Required Resources
 - Local Project Sponsor
 - Burleigh County Role
 - BCWRD Role (ERP Development)
- Advantages – Low Cost
 - Resource Planning (Timing)
 - Material Staging



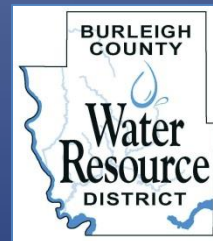
Floodplain Ordinance Revisions

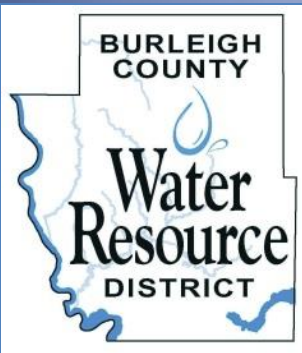
- Burleigh County – Outside City ETA
 - Special Flood Hazard Area
 - Jurisdictional area is now the 500 year flood boundary
 - Base Flood Elevation = 100 year event
 - Finished floor elevations must be the BFE + 2 feet
 - No basements or crawl spaces below BFE + 2 feet



Flood Insurance Reform Act of 2012

- Changes to flood insurance rates
- Increasing to actuarial rates (full cost)
- Discounted rates for early purchase
- FEMA Fact Sheet Handout
 - Recommendation to consider insurance





Questions

- Please be sure to sign in, if you have not already
- Sheets are available to provide written comments
- Evaluation Sheet - provide insight on meeting value
- Comments can also be provided via the BCWRD's web site

www.bcwrdd.org

or the Hay Creek Township Site

Haycreektownship.org

— Posted information

- Power Point Presentation (5-29-2013)

