

# ***MISSOURI RIVER CORRECTIONAL CENTER FLOOD HAZARD MITIGATION FEASIBILITY ASSESSMENT***





Sibley Island

# ***MISSOURI RIVER CORRECTIONAL CENTER – 2009 FLOOD EVENT LOOKING EAST TOWARD MRCC***

Date: 25MAR09  
TOT: 1341Z  
Location: South of Bismarck, ND  
Latitude: N 46° 44.87' / Longitude: W 100° 50.59'  
Object: Missouri River



Fox Island



***MISSOURI RIVER CORRECTIONAL CENTER – 2009 FLOOD EVENT  
LOOKING EAST TOWARD MRCC – FOX ISLAND IS TO THE LEFT***

Date: 25MAR09  
TOT: 1341Z  
Location: South of Bismarck, ND  
Latitude: N 46° 45.34' / Longitude: W 100° 50.77'  
Object: Missouri River

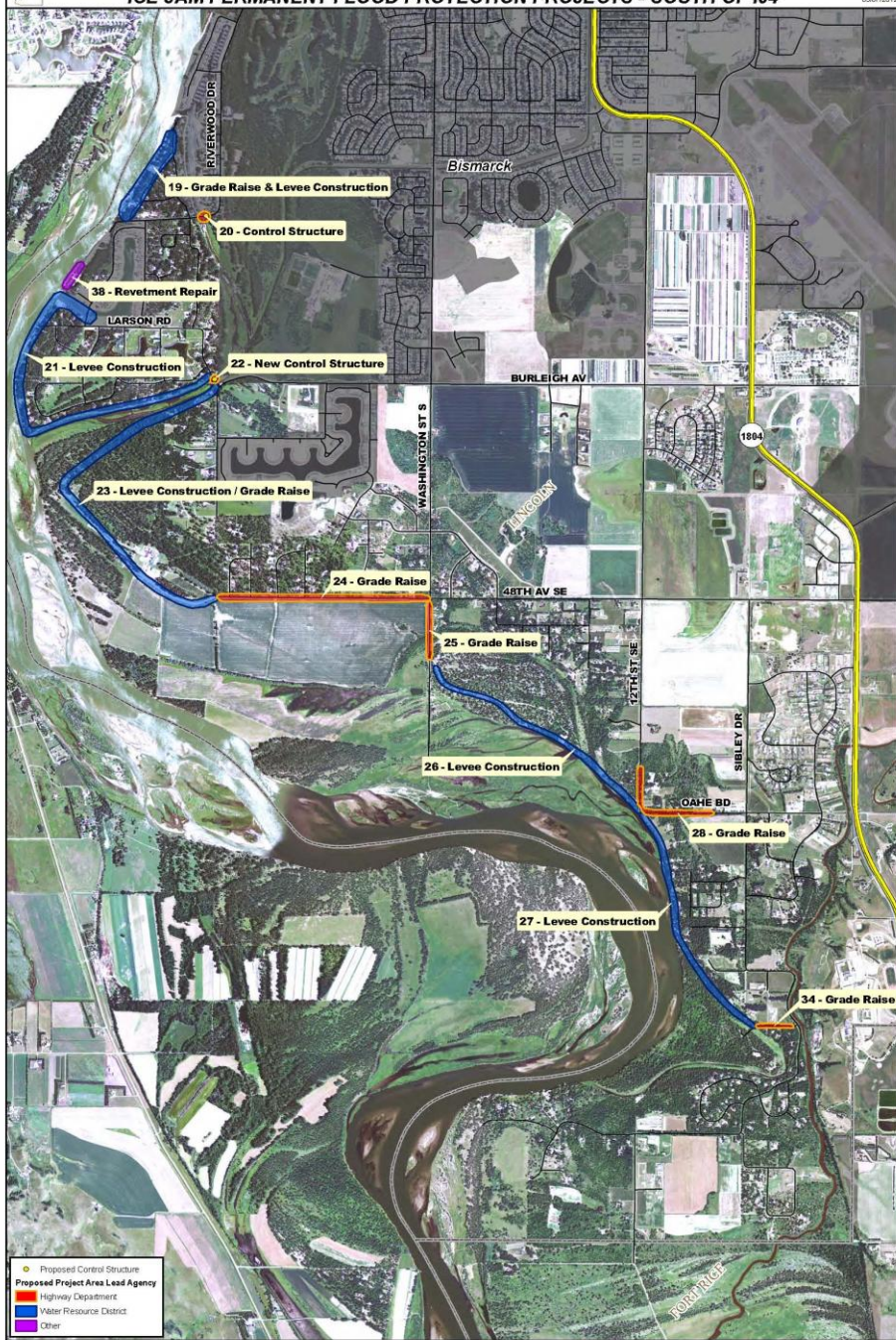




# ***Missouri River Correctional Center July 2011 Flood Event***

 **2011 Temporary Levee**





# Burleigh County

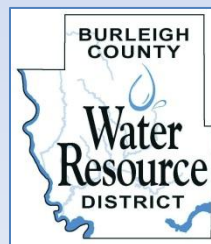
## 20 Foot Protection Plan

### South Side Measures

Proposed Control Structure

#### Proposed Project Area Lead Agency

- Highway Department
- Water Resource District
- Other





# Burleigh County

## 20 Foot Protection Plan

- 19 – River Levee/Harbor Drive Area
- 20 – Mills Avenue Control Structure
- 20A – City of Bismarck Roadway Grade Raise
- 21 – Fox Island Perimeter Levee
- 22 – Tavis Road Grade Raise/Flood Gate
- 23 – Missouri River Correctional Center
- 24 – 48<sup>th</sup> Avenue Grade Raise (2012-13)
- 25 – Washington Street Grade Raise (2012-13)
- 38 – Revetment Repair (2012)

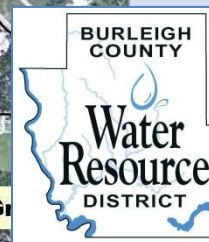
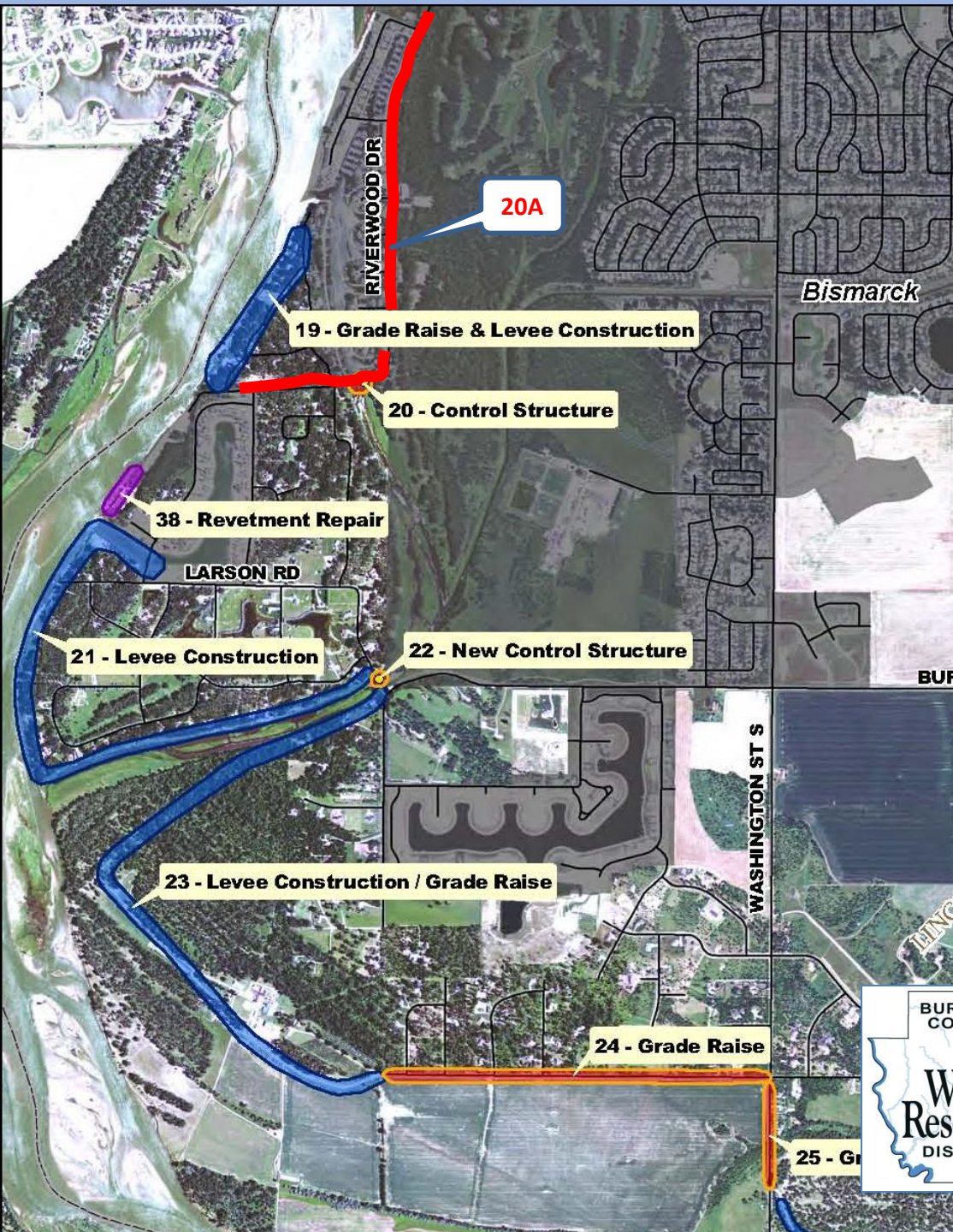
● Proposed Control Structure

### Proposed Project Area Lead Agency

Highway Department

Water Resource District

Other





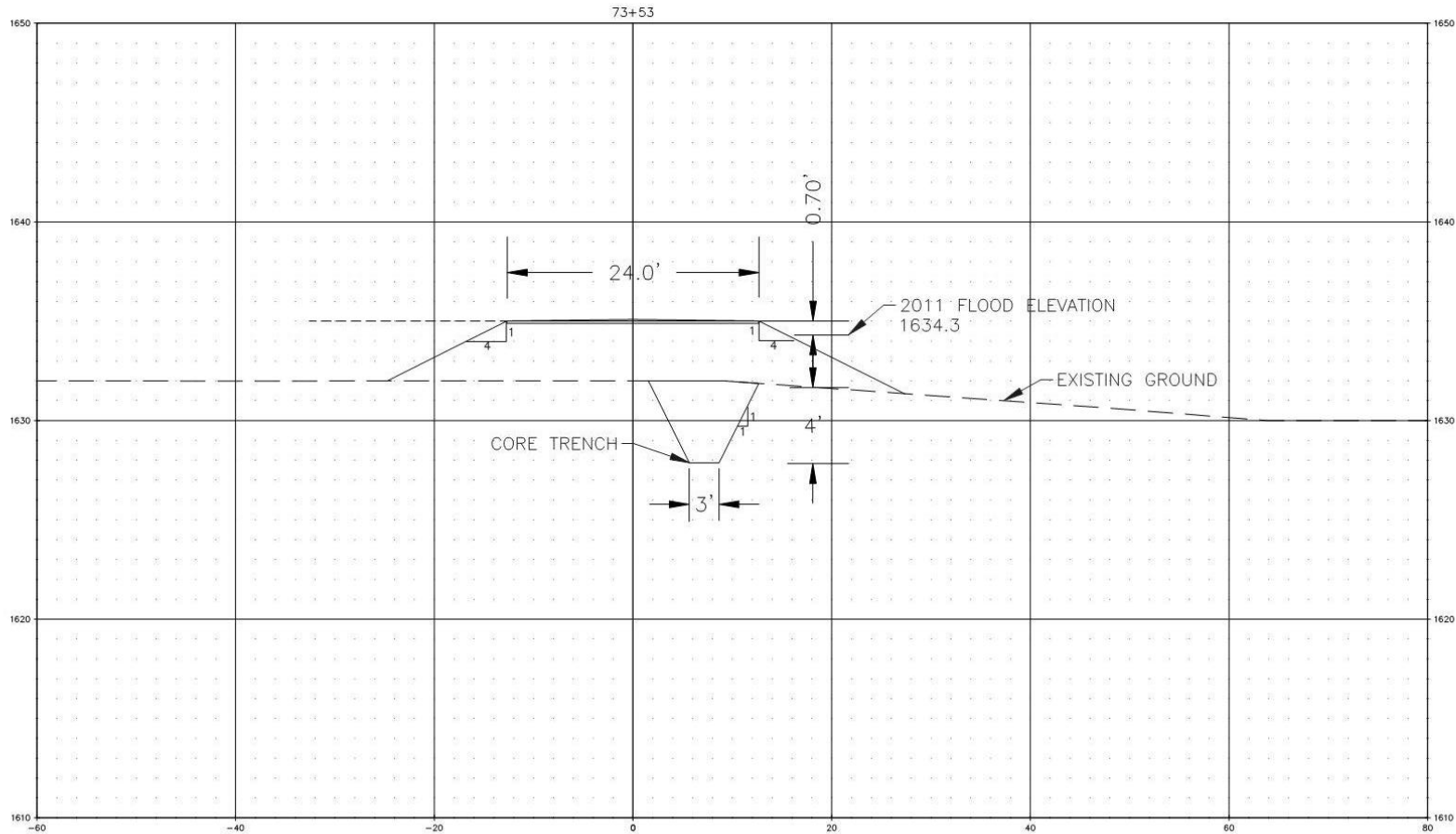


# **Missouri River Correctional Center Protection Area**

**2011 Temporary Levee  
#23 - 48<sup>th</sup> Avenue Grade Raise (2012-13)**

# Missouri River Correctional Center – Typical Roadway Section

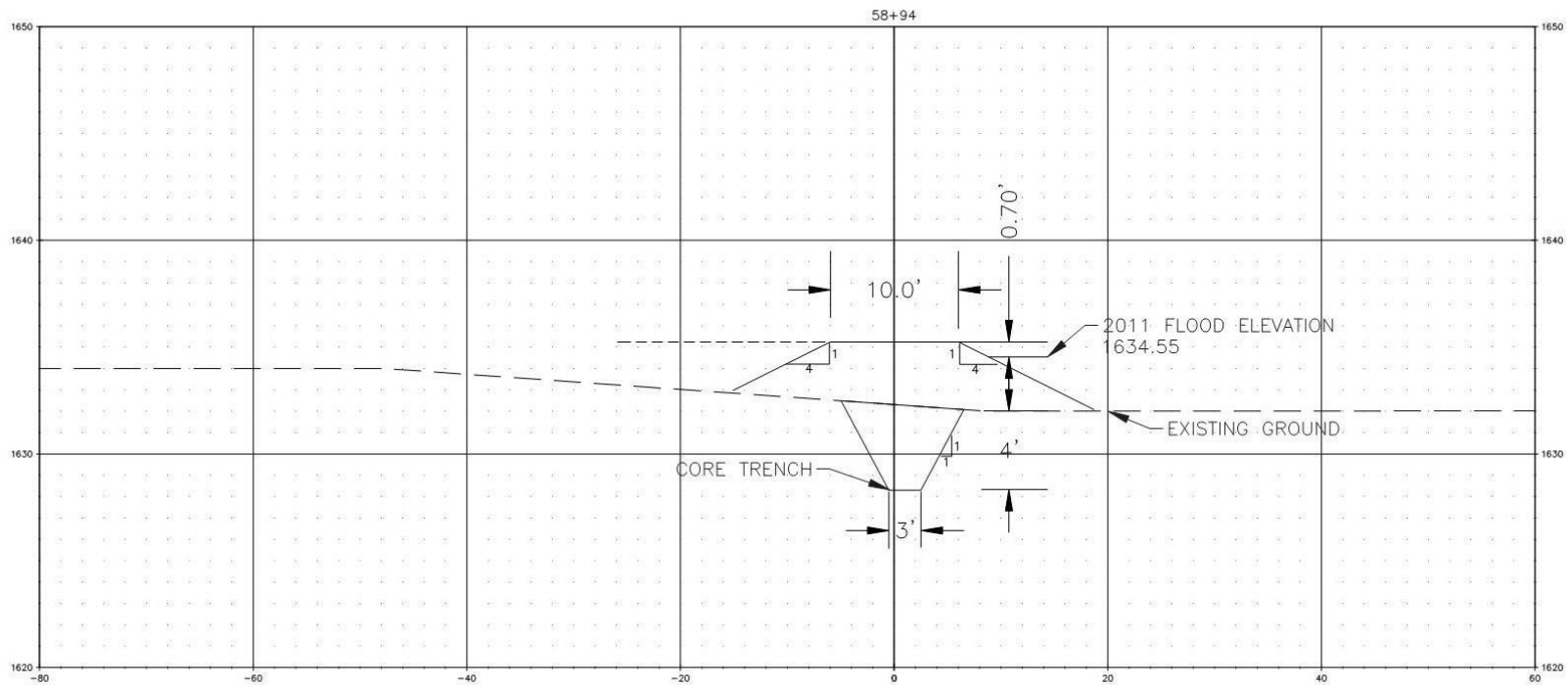
## MRCC LEVEE – TYPICAL ROAD SECTION





# Missouri River Correctional Center – Typical Trail Section

## MRCC LEVEE – TYPICAL TRAIL SECTION



DATUM:  
NAVD 88  
GEOID 03



# Missouri River Correctional Center – Overview



This document is preliminary and not for construction or implementation purposes.

No.	Revision	Date	By



Bismarck  
P: 701.323.0200  
F: 701.323.0300

Drawn by  
NRC  
Checked by  
MHG

Date  
6-7-12  
Scale  
AS SHOWN

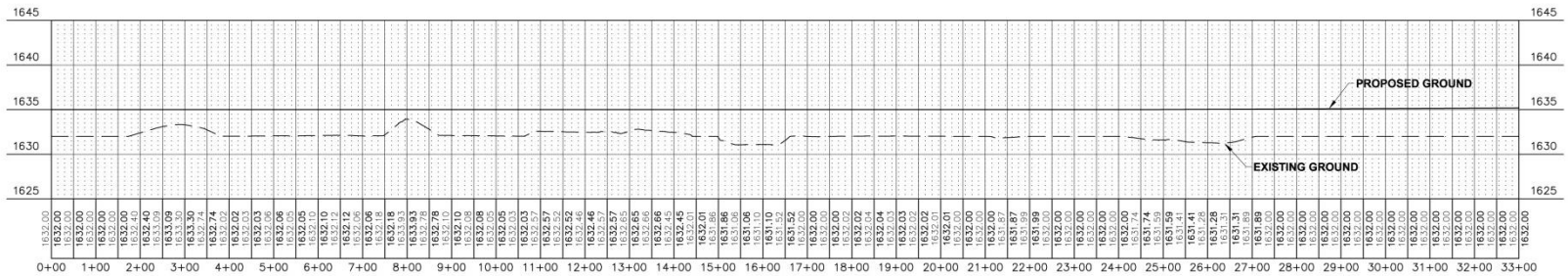
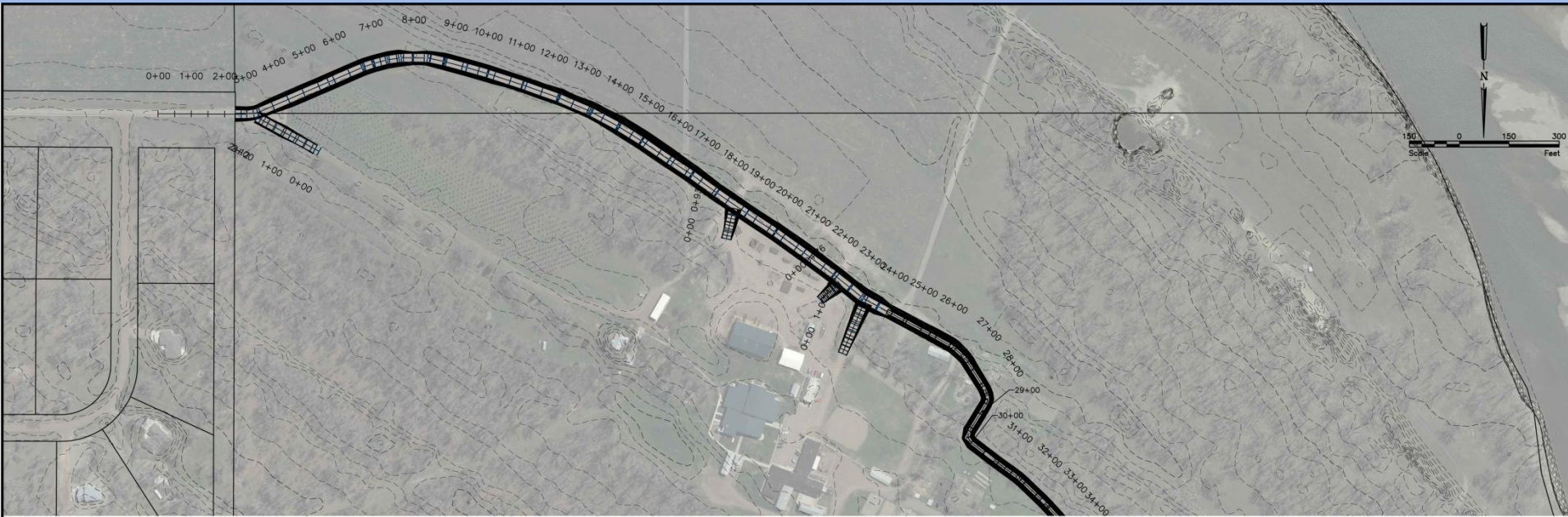
MRCC FLOOD CONTROL ROADWAY/LEVEE  
Burleigh County, ND

Overview  
PROJECT NO. 6025-012

SHEET  
1 of 5



# Missouri River Correctional Center – Plan & Profile, Page 1



This document is preliminary and not for construction or implementation purposes.

No.	Revision	Date	By



Bismarck  
P: 701.323.0200  
F: 701.323.0300

Drawn by  
NRC  
Checked by  
MHG  
Scale  
AS SHOWN

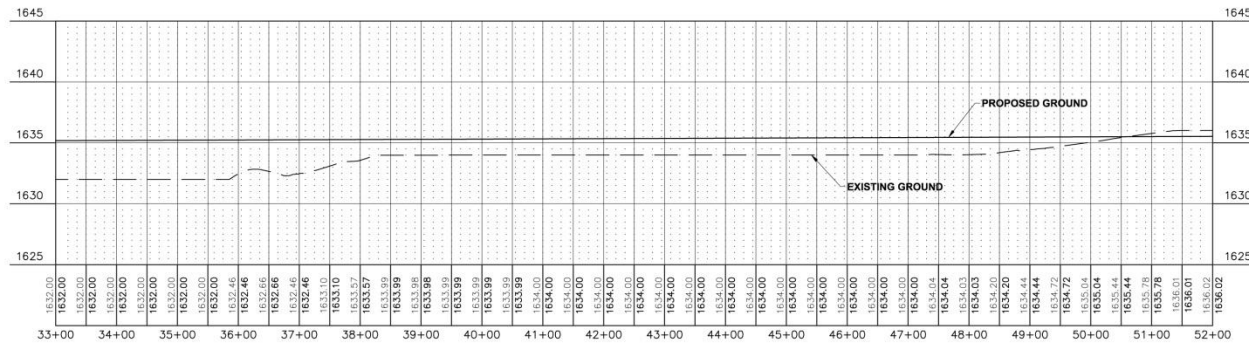
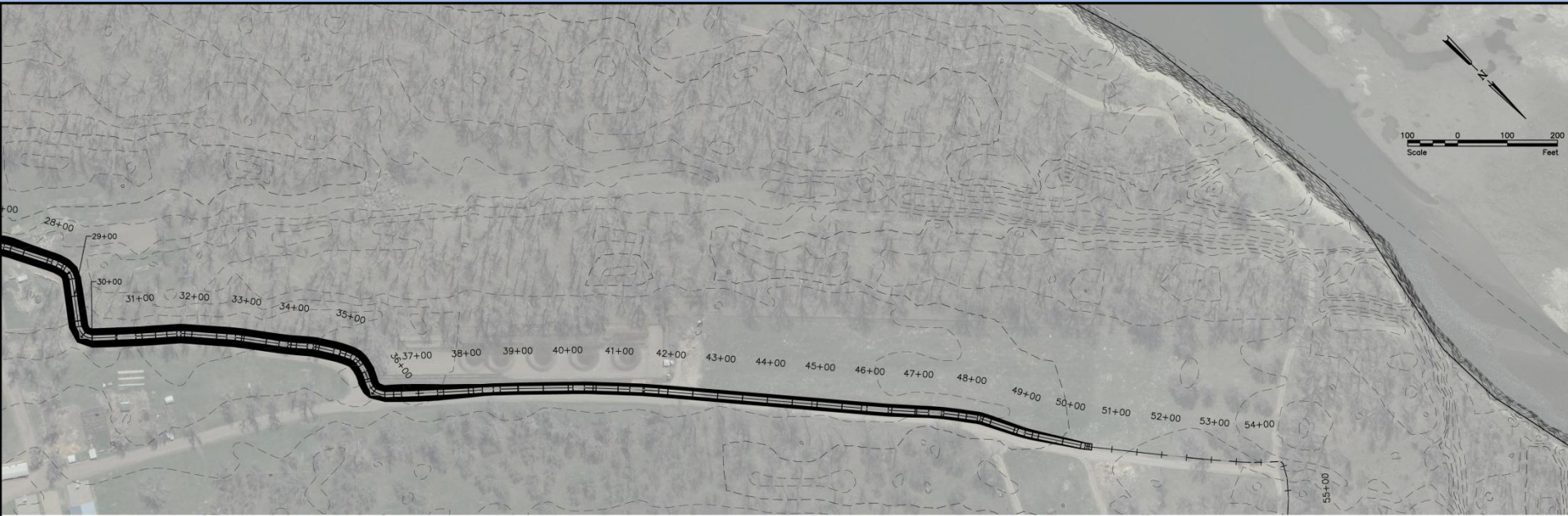
Date  
6-7-12  
MRCC Levee  
Burleigh County, ND

Plan & Profile  
Sta. 0-33  
PROJECT NO. 6025-012

SHEET  
2 of 5



# Missouri River Correctional Center – Plan & Profile, Page 2

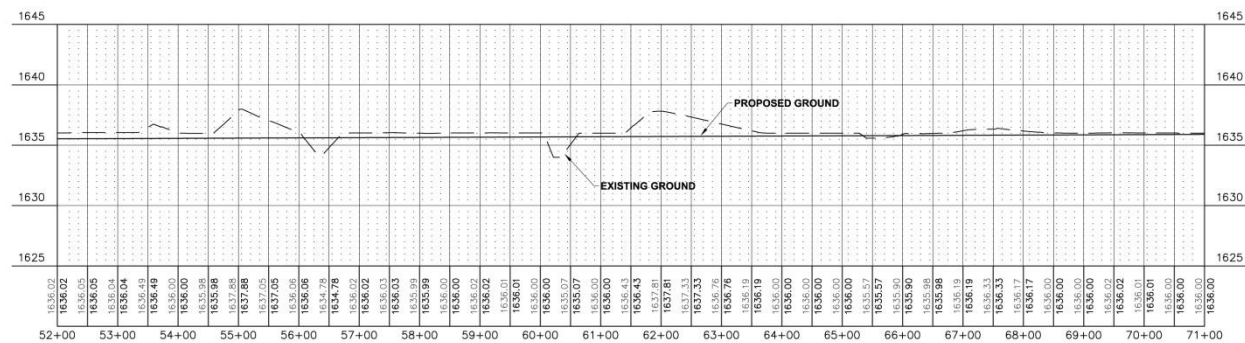
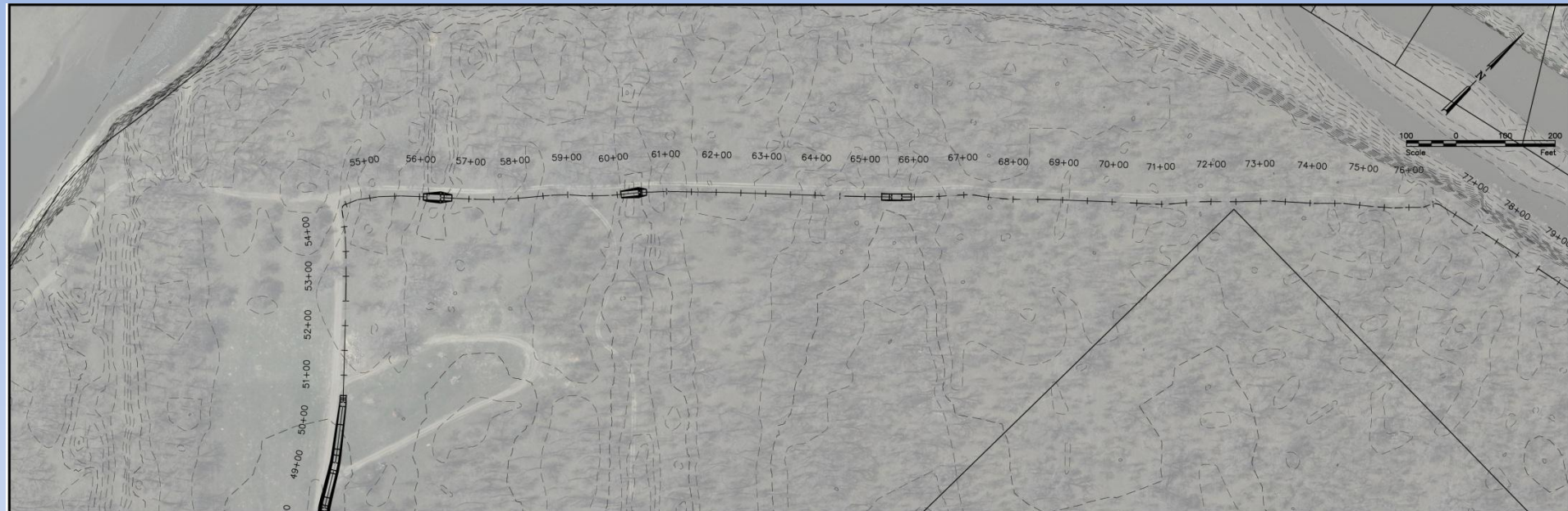


This document is preliminary and not for construction or implementation purposes.

County Water Resource District 6025-012 MRCC Flood Control (CAD) Alignment 4.16-12.dwg 9/8/23 3:52:47/2023 3:59 PM (chown)

									Bismarck		Drawn by NRC	Date 6-7-12	MRCC Levee		Plan & Profile Sta. 33-52		SHEET		
									P: 701.323.0200 F: 701.323.0300		Checked by MHG	Scale AS SHOWN	Burleigh County, ND		PROJECT NO. 6025-012		3 of 5		
No. Revision			Date			By													

# Missouri River Correctional Center – Plan & Profile, Page 3



This document is preliminary and not for construction or implementation purposes.

No.	Revision	Date	By



Bismarck  
P: 701.323.0200  
F: 701.323.0300

Drawn by  
NRC  
Date  
6-7-12  
Checked by  
MHG  
Scale  
AS SHOWN

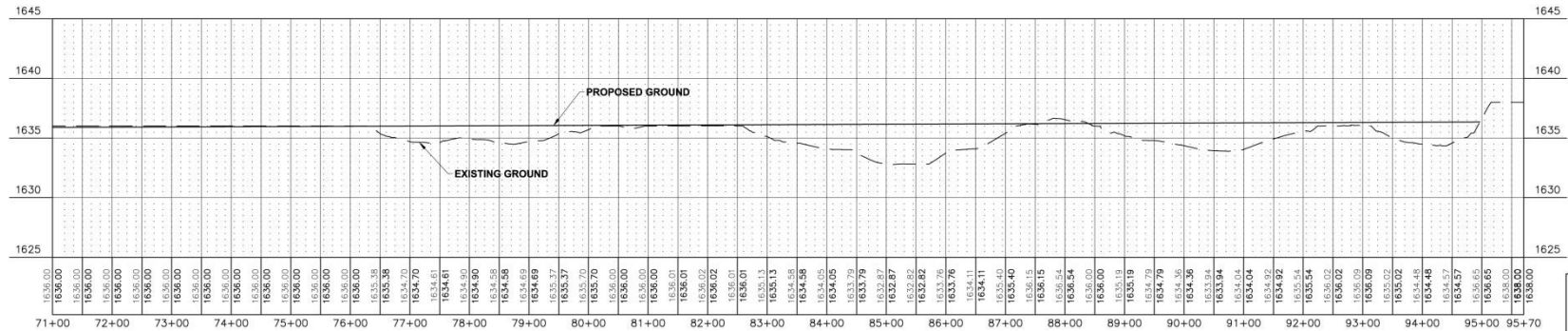
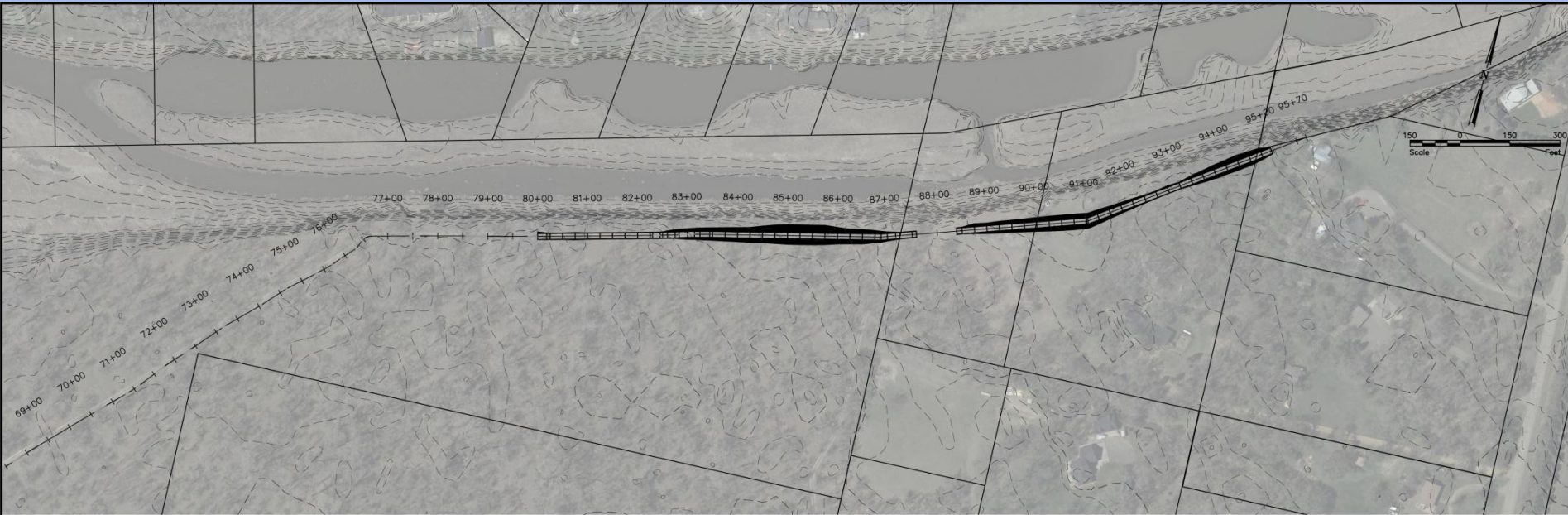
MRCC Levee  
Burleigh County, ND

Plan & Profile  
Sta. 52-71  
PROJECT NO. 6025-012

SHEET  
4 of 5



# Missouri River Correctional Center – Plan & Profile, Page 4



This document is preliminary and not for construction or implementation purposes.

No.	Revision	Date	By



Bismarck		Drawn by NRC	Date 6-7-12	MRCC Levee	Plan & Profile Sta. 71-End PROJECT NO. 6025-012	SHEET  5 of 5
P: 701.323.0200 F: 701.323.0300		Checked by MHG	Scale AS SHOWN			

## ***Missouri River Correctional Center Opinion of Probable Construction Cost***

<b>Item</b>	<b>Roadway Section</b>	<b>Trail Section</b>
<b>Construction</b>	\$338,988	\$331,003
<b>Geotechnical</b>	\$8,000	\$11,000
<b>Preliminary Engineering</b>	\$6,850	\$6,850
<b>Engineering @ 14%</b>	\$47,458	\$46,340
<b>Administration @ 8%</b>	\$27,119	\$26,480
<b>Total Cost</b>	<b>\$428,415</b>	<b>\$421,673</b>



## ***Missouri River Correctional Center Funding Scenario Options***

Scenario	Total Cost	SWC	MRCC	Assessed	Assessed/Lot
Combined Project/No Cost Share	\$850,088	\$0	\$160,000	\$690,088	\$4,894
Combined Project/Trail Cost Share	\$850,088	\$198,602	\$160,000	\$491,486	\$3,486
*Combined Project/Both Cost Share	\$850,088	\$355,145	\$160,000	\$334,943	\$2,375
Separate Project/No Cost Share	\$850,088	\$0	\$428,415	\$428,522	\$3,039
Separate Project/Trail Cost Share	\$850,088	\$198,602	\$428,415	\$223,071	\$1,582
Separate Project/Both Cost Shared	<b>\$850,088</b>	<b>\$355,145</b>	<b>\$265,020</b>	<b>\$223,071</b>	<b>\$1,582</b>

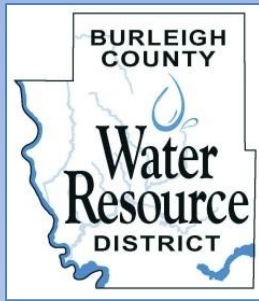
**Separate Project => MRCC to pay for Roadway  
Assessment District to pay for Trail**



# **Missouri River Correctional Center Assessment District Formation Process**

- ✓ **Process Defined in ND Century Code Chapter 61-16.1**
  - **BCWRD Established Special Assessment District Project**
  - **Resident Petitioned Special Assessment District Project**
- ✓ **Final Engineering Report & Assessment List**
- ✓ **State Water Commission – Conditional Cost Share Request**
- ✓ **Assessment List filed with Burleigh County Auditor**
- ✓ **Notice of Hearing Publicly Advertised**
- ✓ **Notice Provided to Each Voting Landowner by Mail**
- ✓ **One Vote for Each Dollar of Assessment**
- ✓ **Ballots Provided**
- ✓ **Projects Passes if More than 50% of Votes Cast Approve**
- ✓ **Final Design**
- ✓ **Construction (2013-2014)**





# **Questions**

- Please be sure to sign in, if you have not already
- Sheets are available to provide written comments
- Evaluation Sheet - provide insight on meeting value
- Comments can also be provided via the BCWRD's web site

[www.bcwrdd.org](http://www.bcwrdd.org)

— Posted information

- MRCC Memorandum
- Power Point Presentation (10-26-2012)

# Protected Parcels (mailing)

