

Original Presentation 10-22-2013

MISSOURI RIVER CORRECTIONAL CENTER FLOOD CONTROL PROJECT



Sibley Island

MISSOURI RIVER CORRECTIONAL CENTER – 2009 FLOOD EVENT LOOKING EAST TOWARD MRCC

Date: 25MAR09
TOT: 1341Z
Location: South of Bismarck, ND
Latitude: N 46° 44.87' / Longitude: W 100° 50.59'
Object: Missouri River

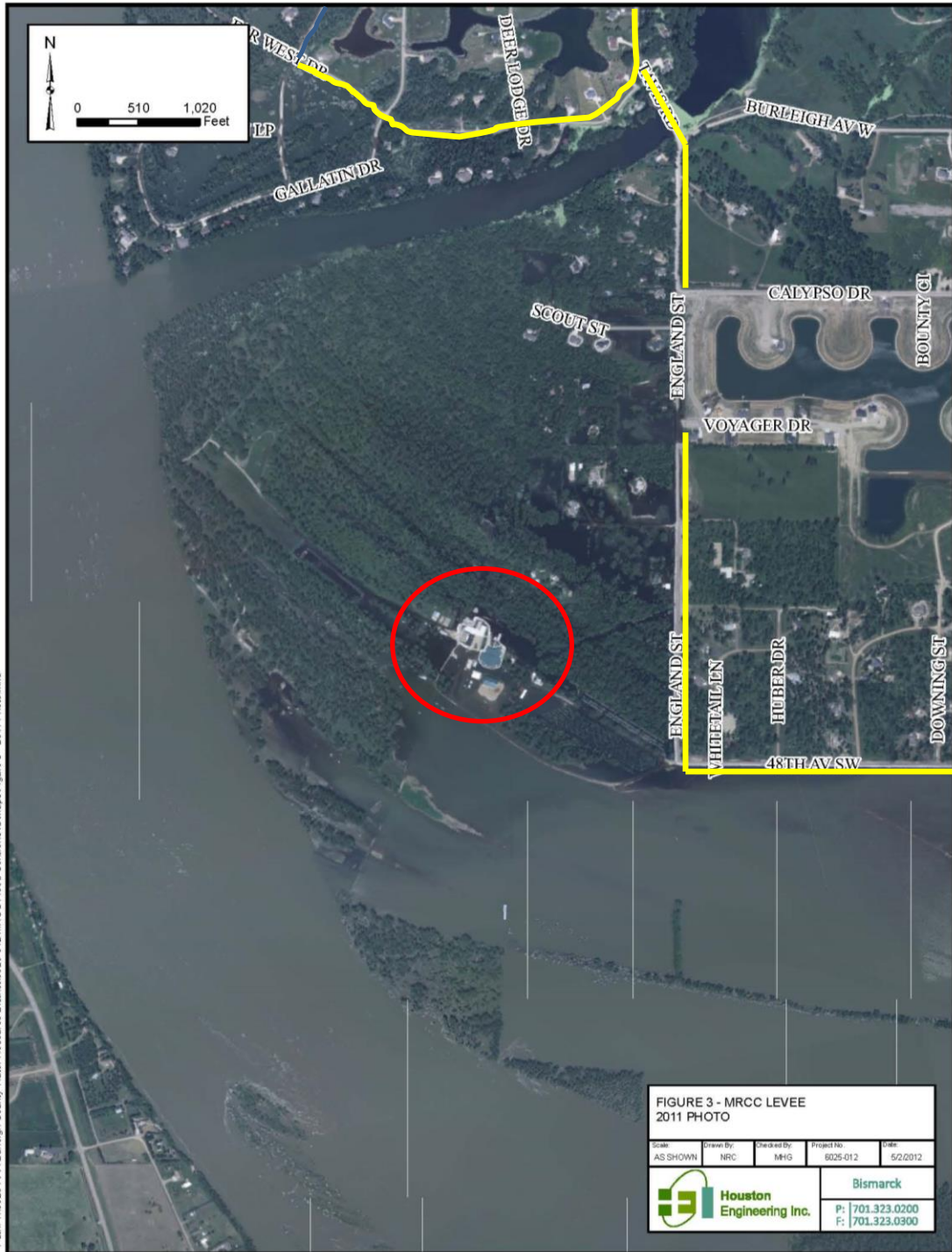


Fox Island



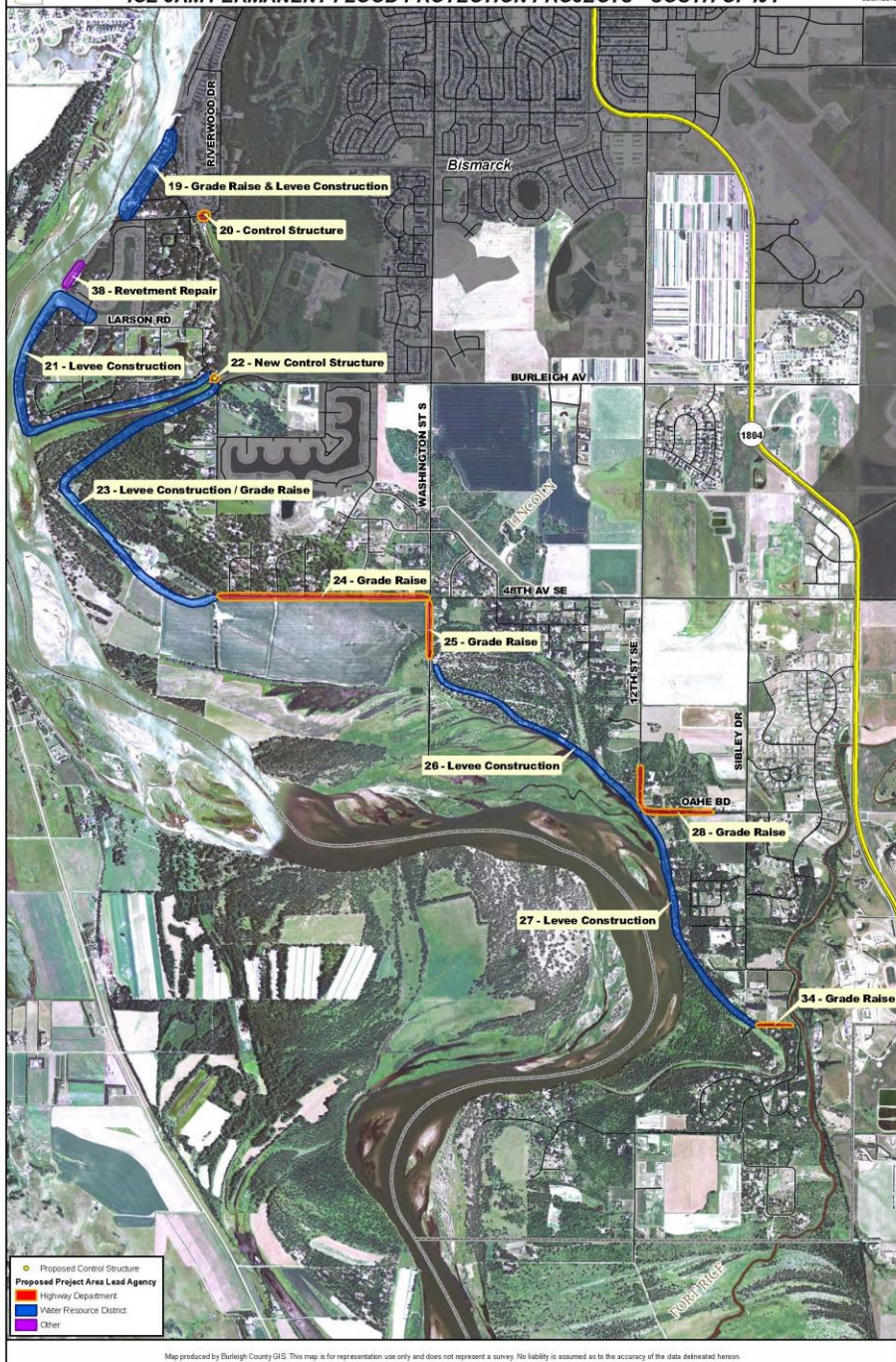
***MISSOURI RIVER CORRECTIONAL CENTER – 2009 FLOOD EVENT
LOOKING EAST TOWARD MRCC – FOX ISLAND IS TO THE LEFT***

Date: 25MAR09
TOT: 1341Z
Location: South of Bismarck, ND
Latitude: N 46° 45.34' / Longitude: W 100° 50.77'
Object: Missouri River



Missouri River Correctional Center July 2011 Flood Event

 **2011 Temporary Levee**



***Its not about the MRCC
It's about community
flood protection***

Burleigh County 20 Foot Protection Plan South Side Measures

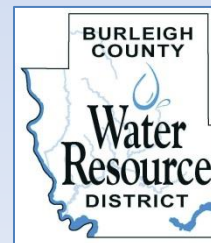
● Proposed Control Structure

Proposed Project Area Lead Agency

Highway Department

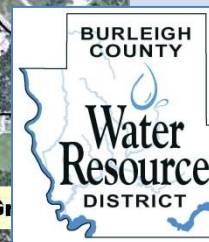
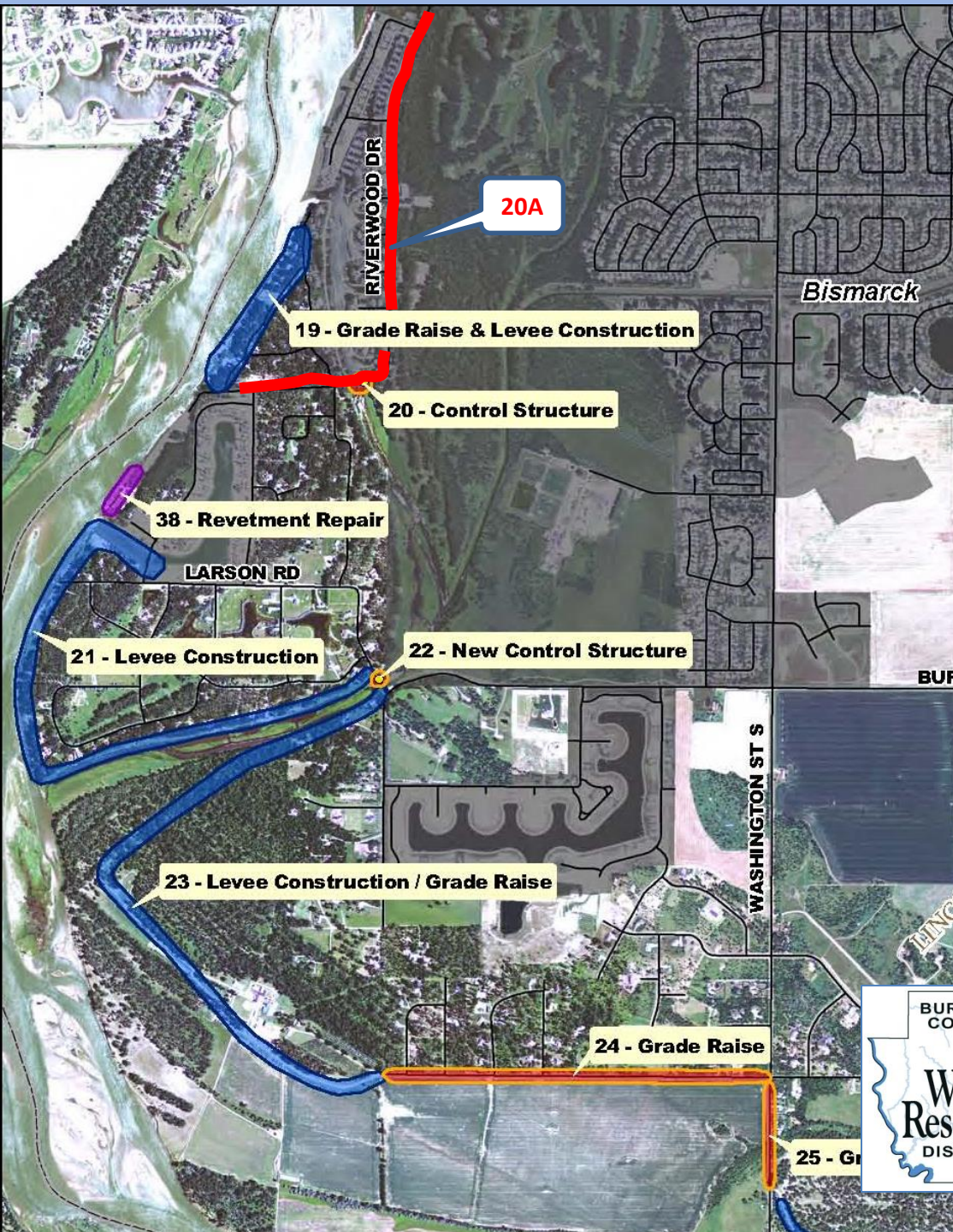
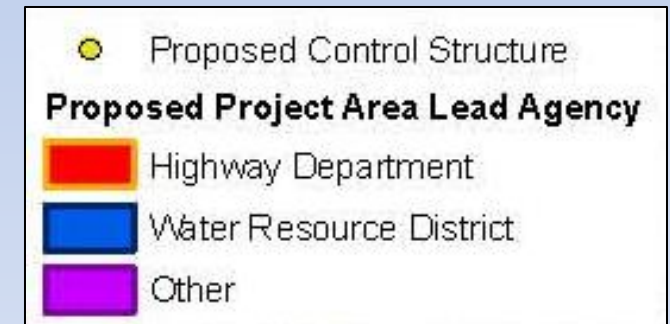
Water Resource District

Other



Burleigh County 20 Foot Protection Plan

- 19 – No longer under consideration
- 20 – *Mills Avenue (2013)*
- 20A – *Riverwood Drive (2013)*
- 21 – *Fox Island Perimeter Levee (2014)*
- 22 – *Tavis Road/Flood Gate/Pump (2013)*
- 23 – *Missouri River Correctional Center (2014)*
- 24 – *48th Avenue Grade Raise (2013)*
- 25 – *Washington Street Grade Raise (2013)*
- 38 – *Revetment Repair (Completed)*





Missouri River Correctional Center Protection Area

**2011 Temporary Levee
#23 - 48th Avenue Grade Raise (2012-13)**



Missouri River Correctional Center Protection Area

**Assessed Properties based on
extent of 2011 Flood Boundary
and Benefit.**

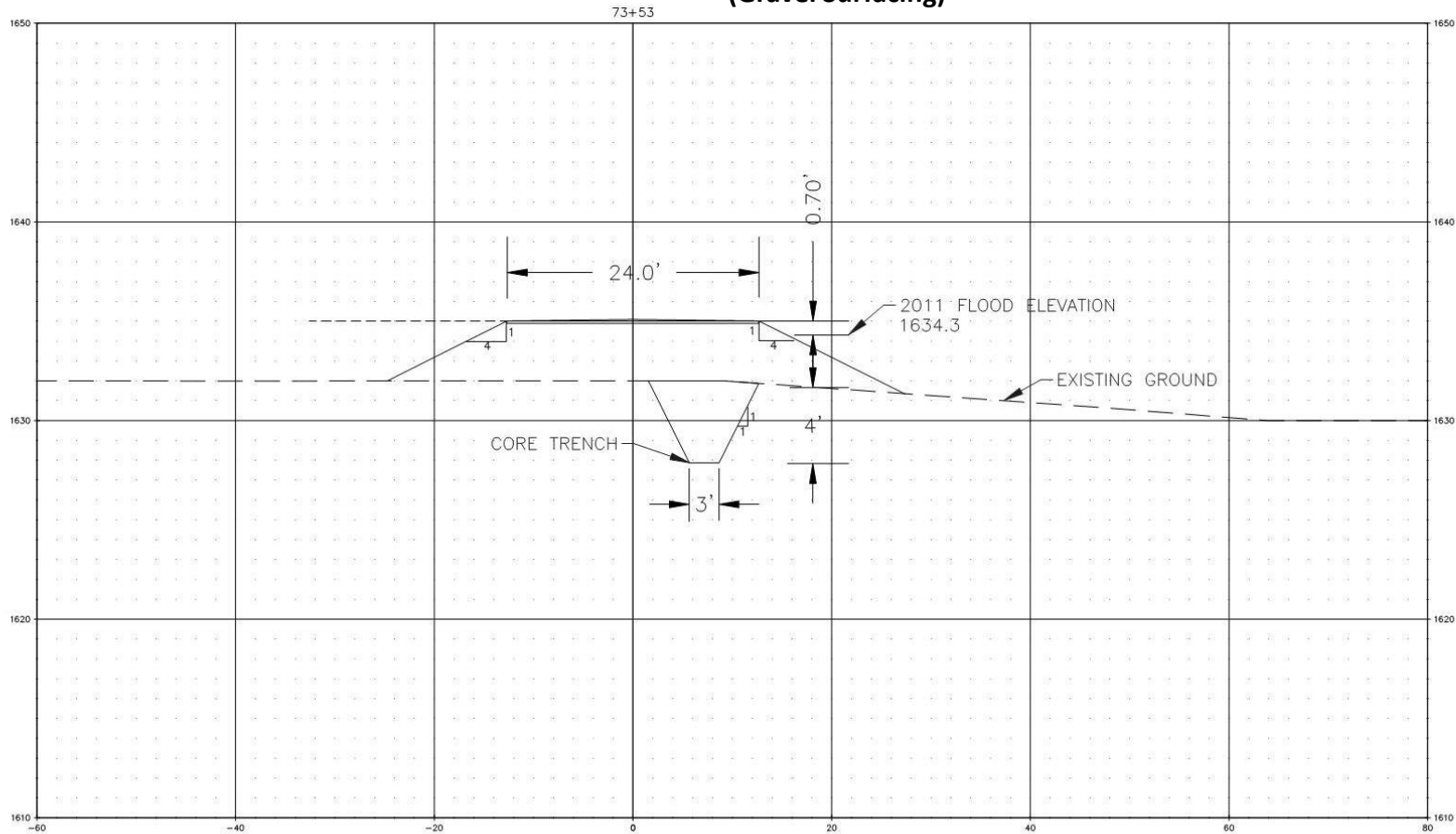
**2011 Temporary Levee
#23 - 48th Avenue Grade Raise (2013)**

**There is a need for public input on
the benefits provided.**

**Is the assessment boundary accurate?
If not why?**

Missouri River Correctional Center – Typical Roadway Section

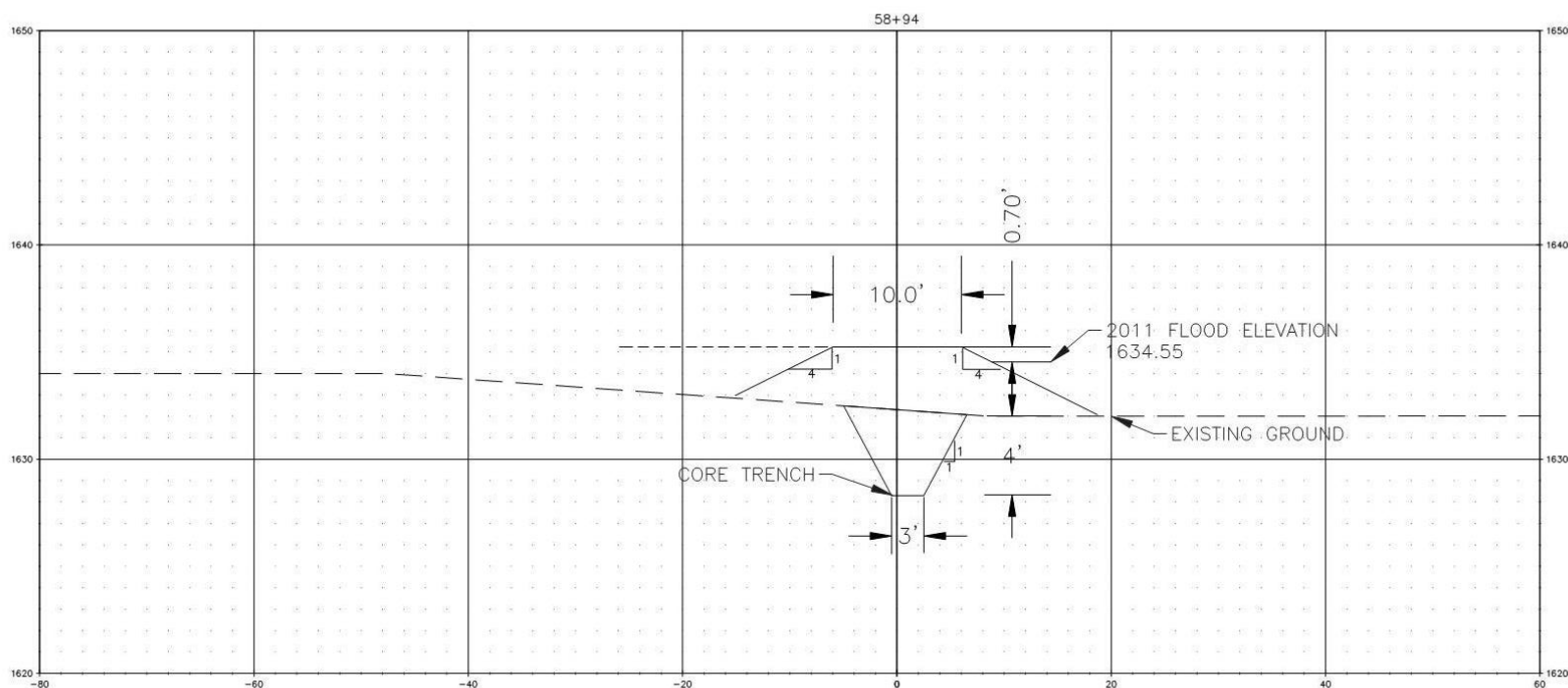
MRCC LEVEE – TYPICAL ROAD SECTION (Gravel Surfacing)



DATUM:
NAVD 88
GEOID 03

Missouri River Correctional Center – Typical Trail Section

MRCC LEVEE – TYPICAL TRAIL SECTION



DATUM:
NAVD 88
GEOID 03

Missouri River Correctional Center – Overview



This document is preliminary and not for construction or implementation purposes.

No.	Revision	Date	By



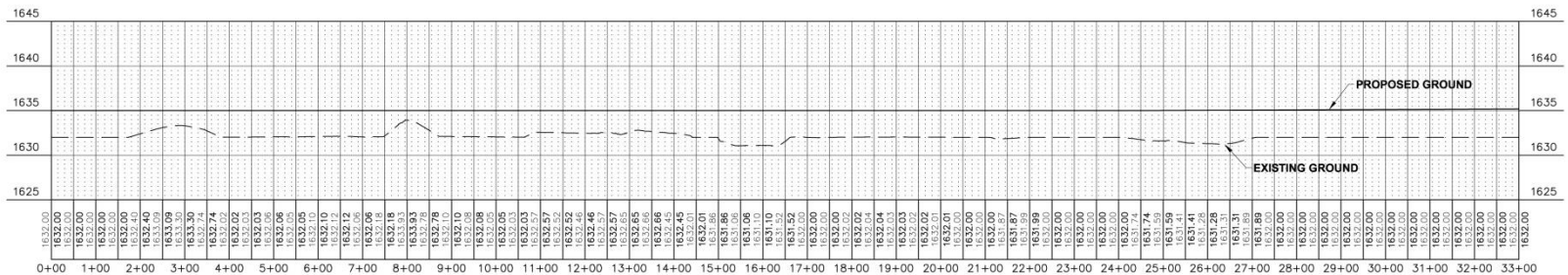
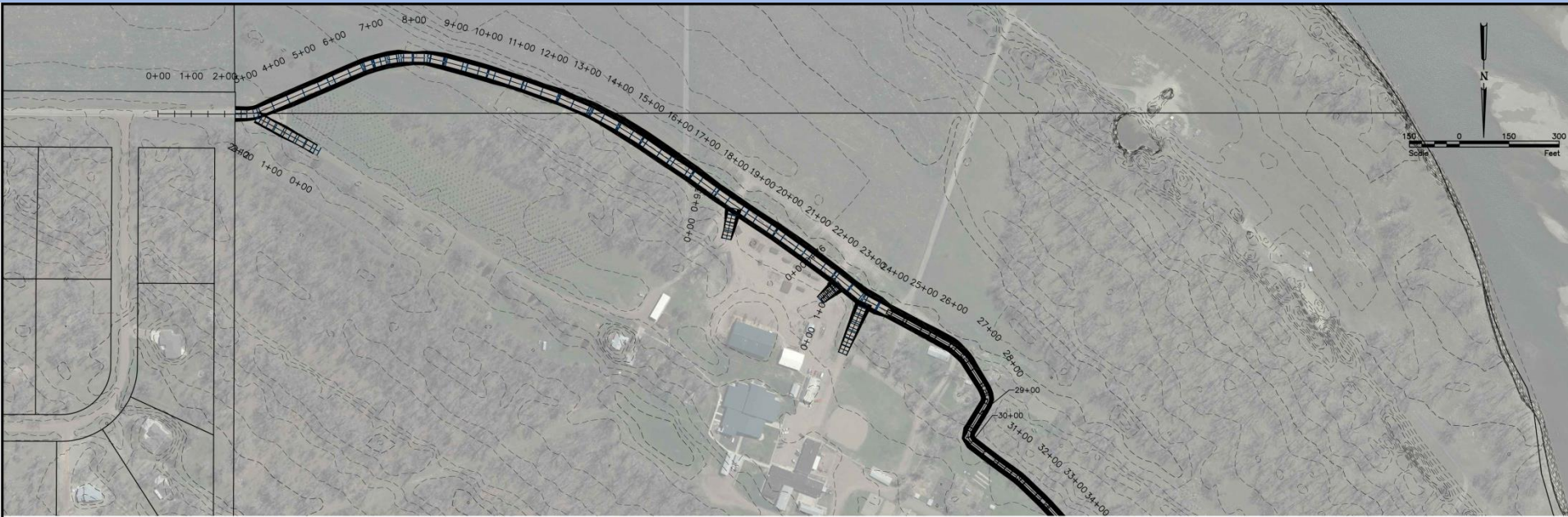
Bismarck	Drawn by NRC	Date 6-7-12
P: 701.323.0200 F: 701.323.0300	Checked by MHG	Scale AS SHOWN

MRCC FLOOD CONTROL ROADWAY/LEVEE
Burleigh County, ND

Overview	SHEET
PROJECT NO. 6025-012	1 of 5

T:\6025-000\Burleigh County Water Resource District\6025-012 MRCC Flood Control\CAD\Alignment 4-16-12.dwg - Overview 6/7/2012 5:30 PM (chovy)

Missouri River Correctional Center – Plan & Profile, Page 1



This document is preliminary and not for construction or implementation purposes.

No.	Revision	Date	By



Bismarck
P: 701.323.0200
F: 701.323.0300

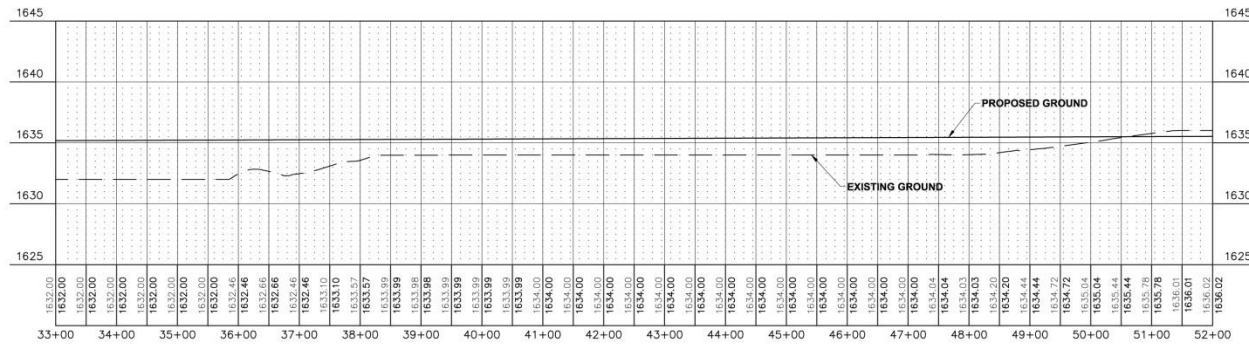
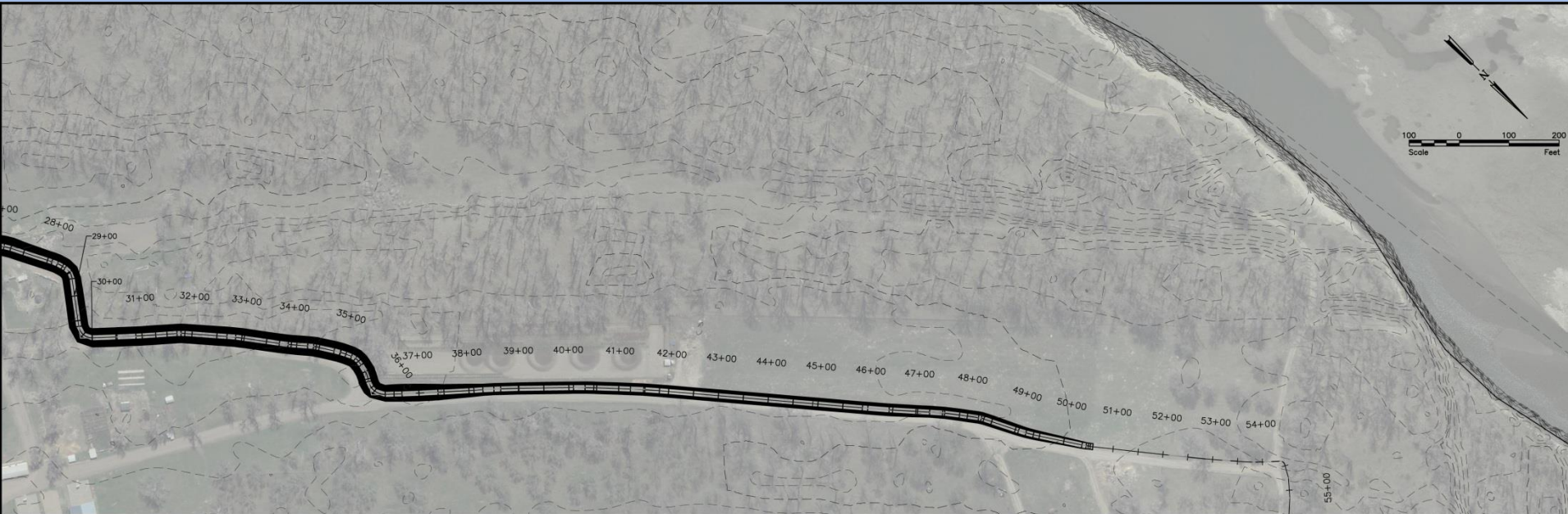
Drawn by
NRC
Checked by
MHG
Scale
AS SHOWN

Date
6-7-12
MRCC Levee
Burleigh County, ND

Plan & Profile
Sta. 0-33
PROJECT NO. 6025-012

SHEET
2 of 5

Missouri River Correctional Center – Plan & Profile, Page 2

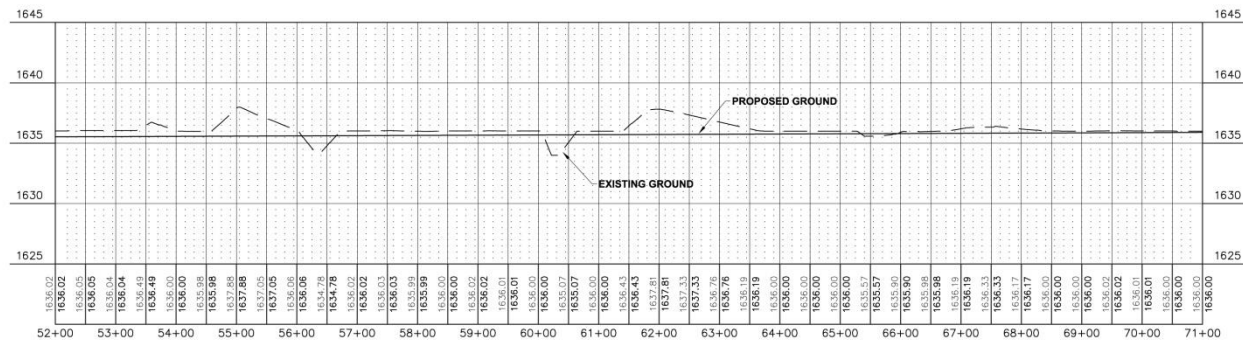
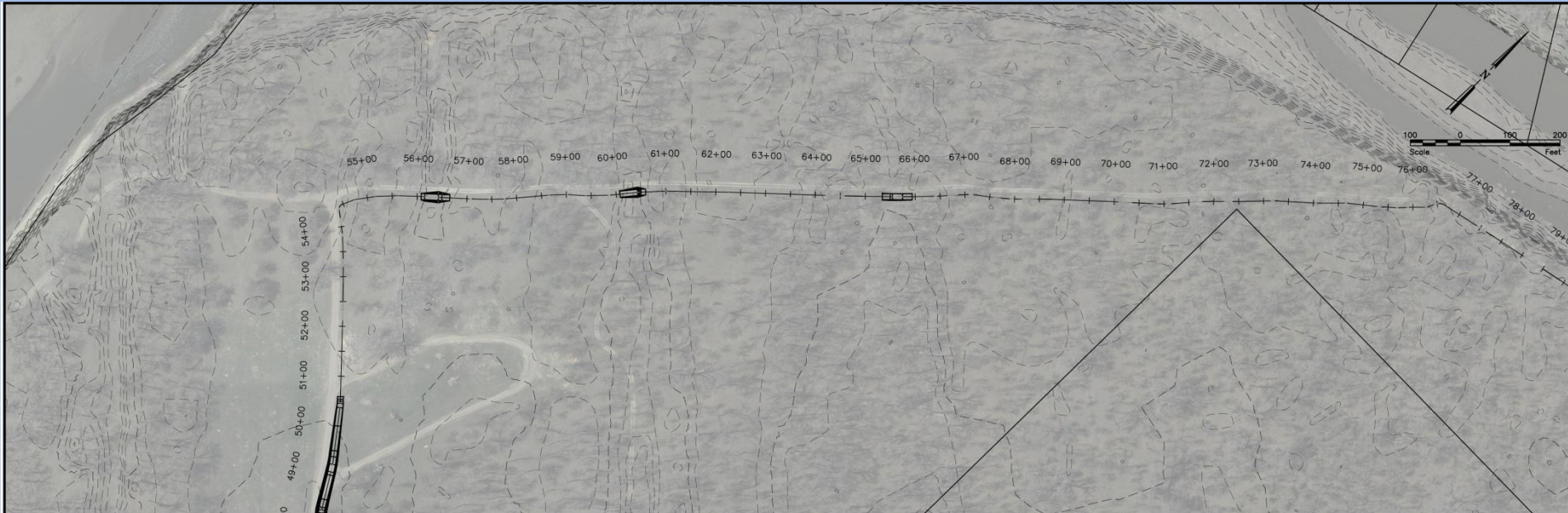


This document is preliminary and not for construction or implementation purposes.

County Water Resource District 6025-012 MRCC Flood Control (CAD) Alignment 4.16-12.dwg 9/8/2012 3:29 PM (chown)

					Bismarck		Drawn by NRC	Date 6-7-12	MRCC Levee Burleigh County, ND	Plan & Profile Sta. 33-52 PROJECT NO. 6025-012	SHEET 3 of 5
No. Revision							P: 701.323.0200 F: 701.323.0300	Checked by MHG			
Date By											

Missouri River Correctional Center – Plan & Profile, Page 3



This document is preliminary and not for construction or implementation purposes.

No.	Revision	Date	By



Bismarck
P: 701.323.0200
F: 701.323.0300

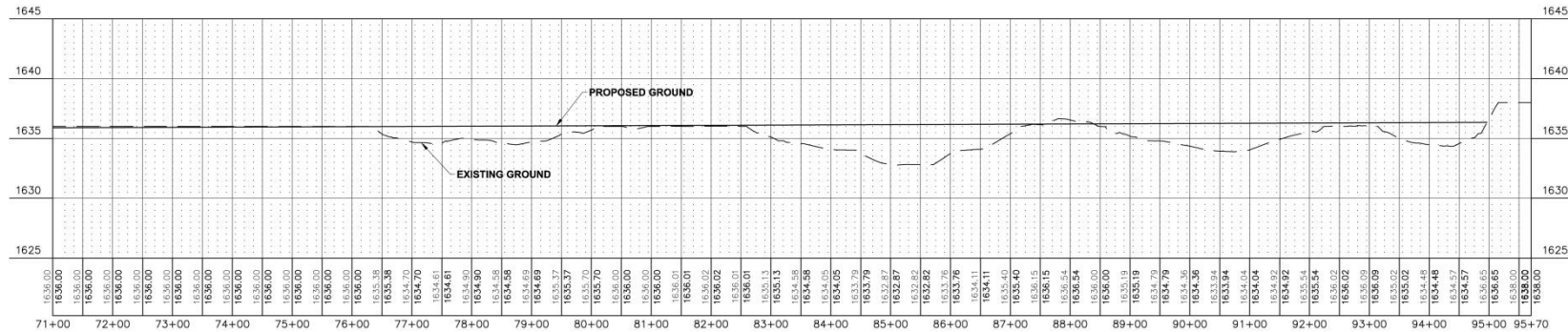
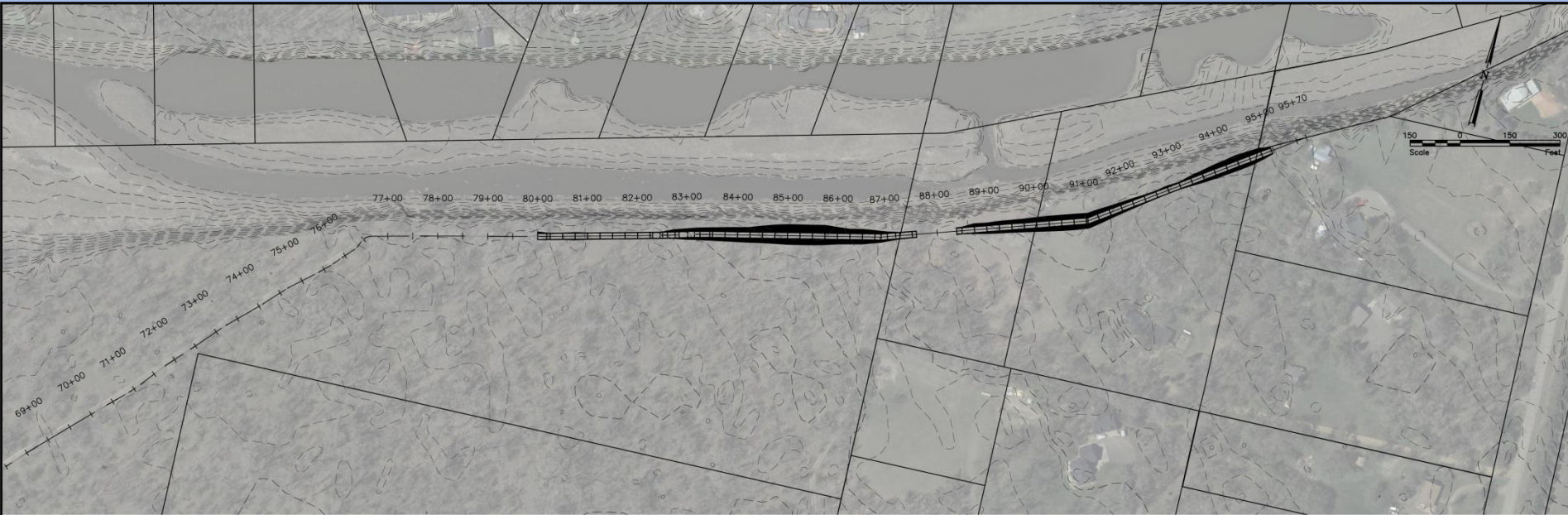
Drawn by
NRC
Date
6-7-12
Checked by
MHG
Scale
AS SHOWN

MRCC Levee
Burleigh County, ND

Plan & Profile
Sta. 52-71
PROJECT NO. 6025-012

SHEET
4 of 5

Missouri River Correctional Center – Plan & Profile, Page 4



This document is preliminary and not for construction or implementation purposes.

No.	Revision	Date	By



Bismarck	Drawn by NRC	Date 6-7-12
P: 701.323.0200 F: 701.323.0300	Checked by MHG	Scale AS SHOWN

MRCC Levee
Burleigh County, ND

Plan & Profile Sta. 71-End
PROJECT NO. 6025-012

SHEET
5 of 5

Missouri River Correctional Center Opinion of Probable Construction Cost

Project Item	Levee	Road		MRCC Contribution	Total Assessed Cost
		Grade Raise	Surfacing		
Construction	506,056	414,060	101,717		
Geotechnical	10,000	10,000			
Engineering	91,090	74,531	18,309		
Administration	40,485	33,125	8,137		
Total Cost Without SWC	647,631	531,716	128,163	-\$349,950	957,560
SWC Cost Share	-\$303,633	-\$248,436	0		
Total Cost With Cost Share	343,998	283,280	128,163	-\$349,950	405,491

2012 Cost = \$ 850,808

2013 Cost = \$ 957,560 – 12.5% Increase

Assessment Options Evaluated

- By Lot – Postage Stamp Rate
 - ~ \$6,179 or \$2,616 W/SWC
- Acreage
 - Rural Residential Lots ~ \$6,000 to \$3,000 based on size
 - 40 acre parcel ~ \$101,709 to \$43,070 W/SWC
- Percentage Distribution

Lot Size	Percent Assessment	No SWC Cost Share	w/SWC Cost Share
➤ 10 acres	100%	\$12,468	\$5,280
10 < > 5 acres	75%	\$9,351	\$3,960
5 < > 1 acres	50%	\$6,234	\$2,640
< 1 acre	10%	\$1,247	\$528

Ability for Reassessment

61-16.1-26. Reassessment of benefits.

The water resource board **may hold at any time or, upon petition** of any affected landowner or political subdivision which has been assessed after a project has been in existence for at least one year, shall hold a hearing for the purpose of determining the benefits of such project to each tract of land affected. At least ten days' notice of the hearing must be given by publication in the newspaper or newspapers having general circulation in the district and in the official

county newspaper of each county in which the benefited lands are located and by mailing notice thereof by ordinary mail to each owner of land whose assessment is proposed to be raised as determined by the records of the recorder or county treasurer. The provisions of this chapter governing the original determination of benefits and assessment of costs apply to any reassessment of benefits carried out under this section. The board may not be forced to make such reassessment more than once every ten years, nor may any assessment or balance thereof supporting a project fund be reduced or impaired by reassessment or otherwise so long as bonds payable out of such fund remain unpaid and moneys are not available in such fund to pay all such bonds in full, with interest. Costs of maintenance must be prorated in accordance with any plan for reassessment of benefits that has been adopted.

Missouri River Correctional Center Funding Scenario Options

Lot Size	Percent Assessment	No SWC Cost Share	w/SWC Cost Share
➤ 10 acres	100%	\$12,468	\$5,280
10 < > 5 acres	75%	\$9,351	\$3,960
5 < > 1 acres	50%	\$6,234	\$2,640
< 1 acre	10%	\$1,247	\$528

**Separate Project => MRCC to pay for Roadway
Assessment District to pay for Trail**

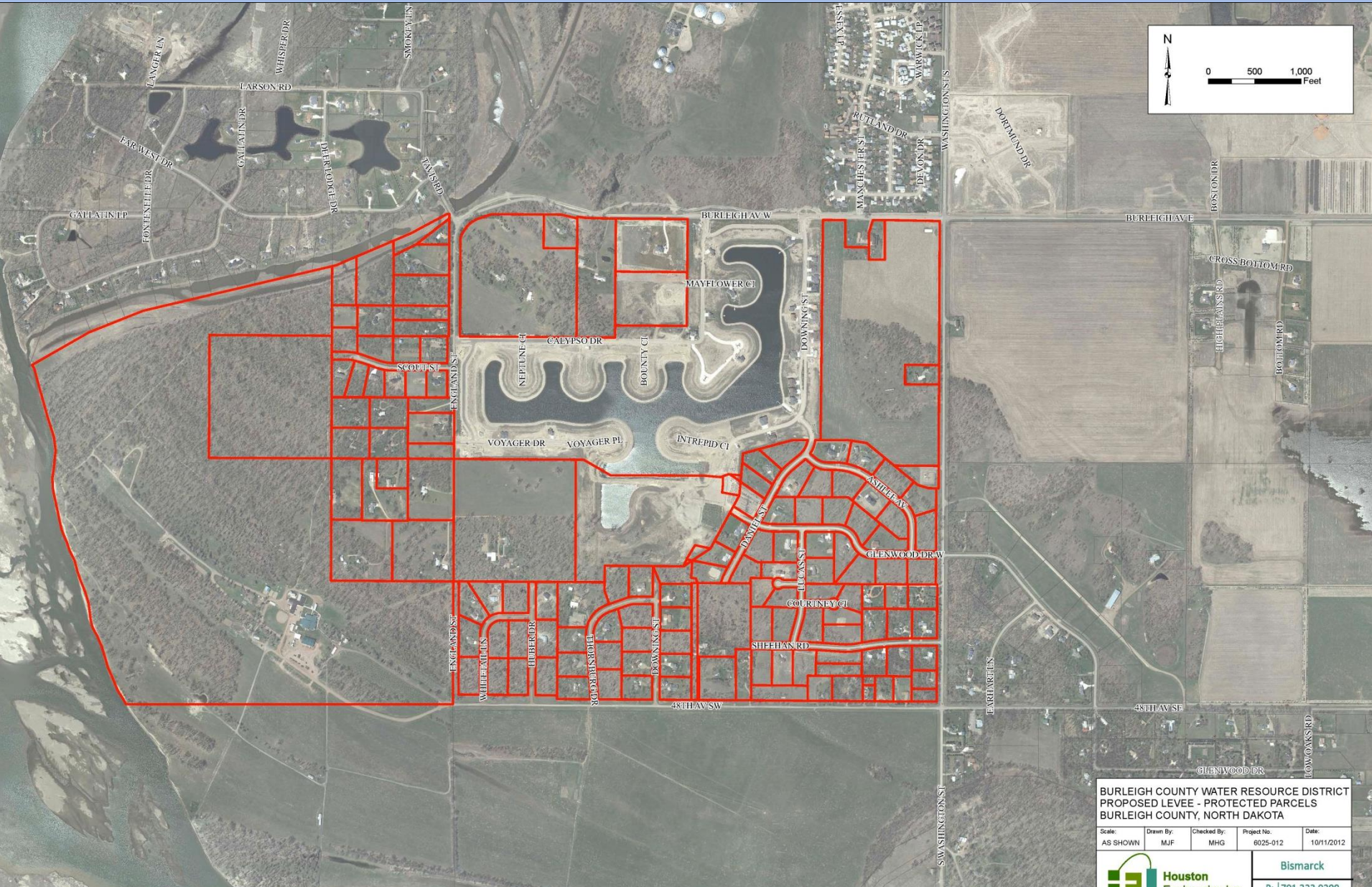
Project Vote => Based on “No SWC Cost Share”

SWC cost share request to be submitted after project is approved through the vote

Missouri River Correctional Center Assessment District Formation Process

- ✓ **ND Century Code Chapter 61-16.1**
 - **BCWRD to establish Special Assessment District (October 2013)**
- ✓ **Final Engineering Report & Assessment List (October 2013)**
 - **Review public input**
- ✓ **Assessment List to be filed with Burleigh County Auditor**
- ✓ **Notice of Public Hearing – Advertised**
- ✓ **Notice Provided to Each Voting Landowner by Mail**
- ✓ **One Vote for Each Dollar of Assessment**
- ✓ **Ballots Provided for Mailing**
- ✓ **Public Hearing – December 2013 (WRD Meeting)**
- ✓ **Projects Passes if More than 50% of the Votes Cast Approve**
- ✓ **Assessment Appeals Process**
- ✓ **State Water Commission – Cost Share Request (2013)**
- ✓ **Design (2014)**
- ✓ **Construction (2014)**

Protected Parcels (2012 Mailing)



BURLEIGH COUNTY WATER RESOURCE DISTRICT
PROPOSED LEVEE - PROTECTED PARCELS
BURLEIGH COUNTY, NORTH DAKOTA

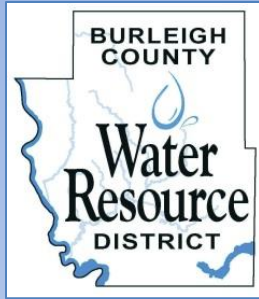
Scale:	Drawn By:	Checked By:	Project No:	Date:
AS SHOWN	MJF	MHG	6025-012	10/11/2012



Bismarck

Protected Parcels (2013 Mailing)





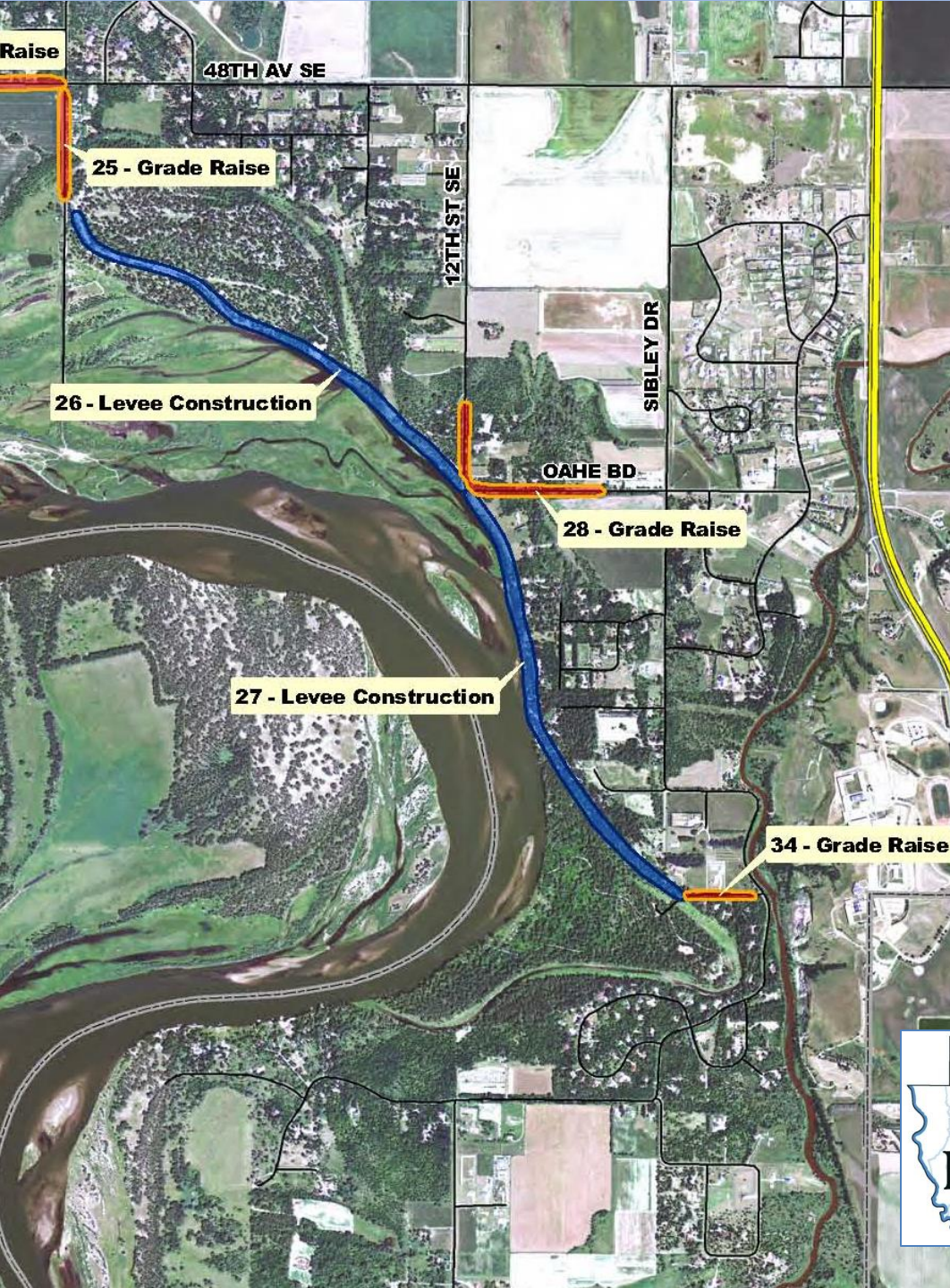
Questions

- Please be sure to sign in, if you have not already
- Sheets are available to provide written comments
- Comments can also be provided via the BCWRD's web site

www.bcwrdd.org

— Posted information

- MRCC Memorandum (8-15-2013)
- Power Point Presentation (10-22-2012)
- Power Point Presentation (9-17-2013)



Burleigh County 20 Foot Protection Plan

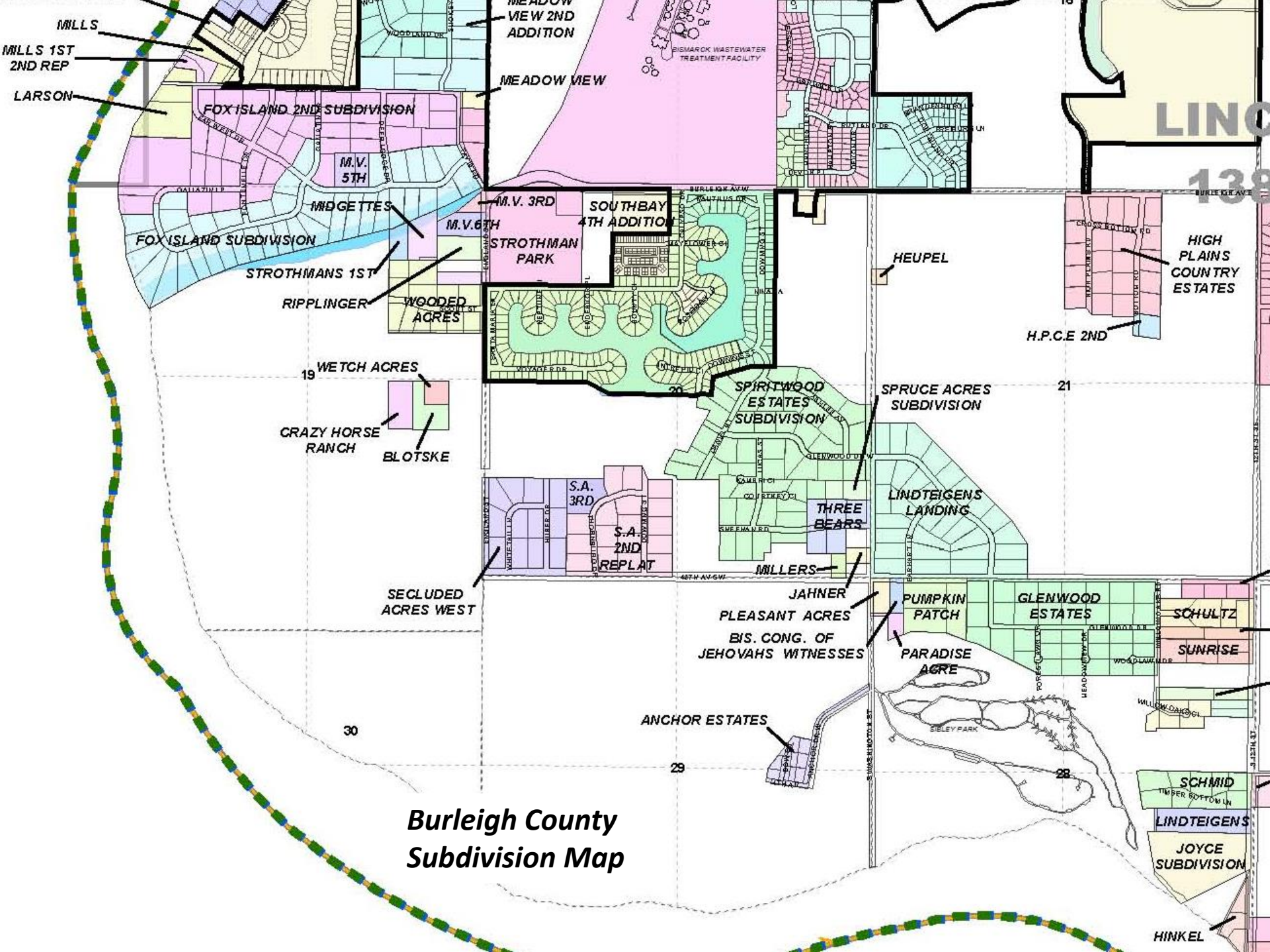
- 23 – Missouri River Correctional Center (2014)
- 24 – 48th Avenue Grade Raise (2013)
- 25 – Washington Street Grade Raise (2013-2015)
- 26 – Sibley Island Levee - Phase I
- 27 – Sibley Estates Levee – Phase II
- 28 – Oahe Bend Grade Raise -
- 34 – 76th Avenue Grade Raise -

● Proposed Control Structure

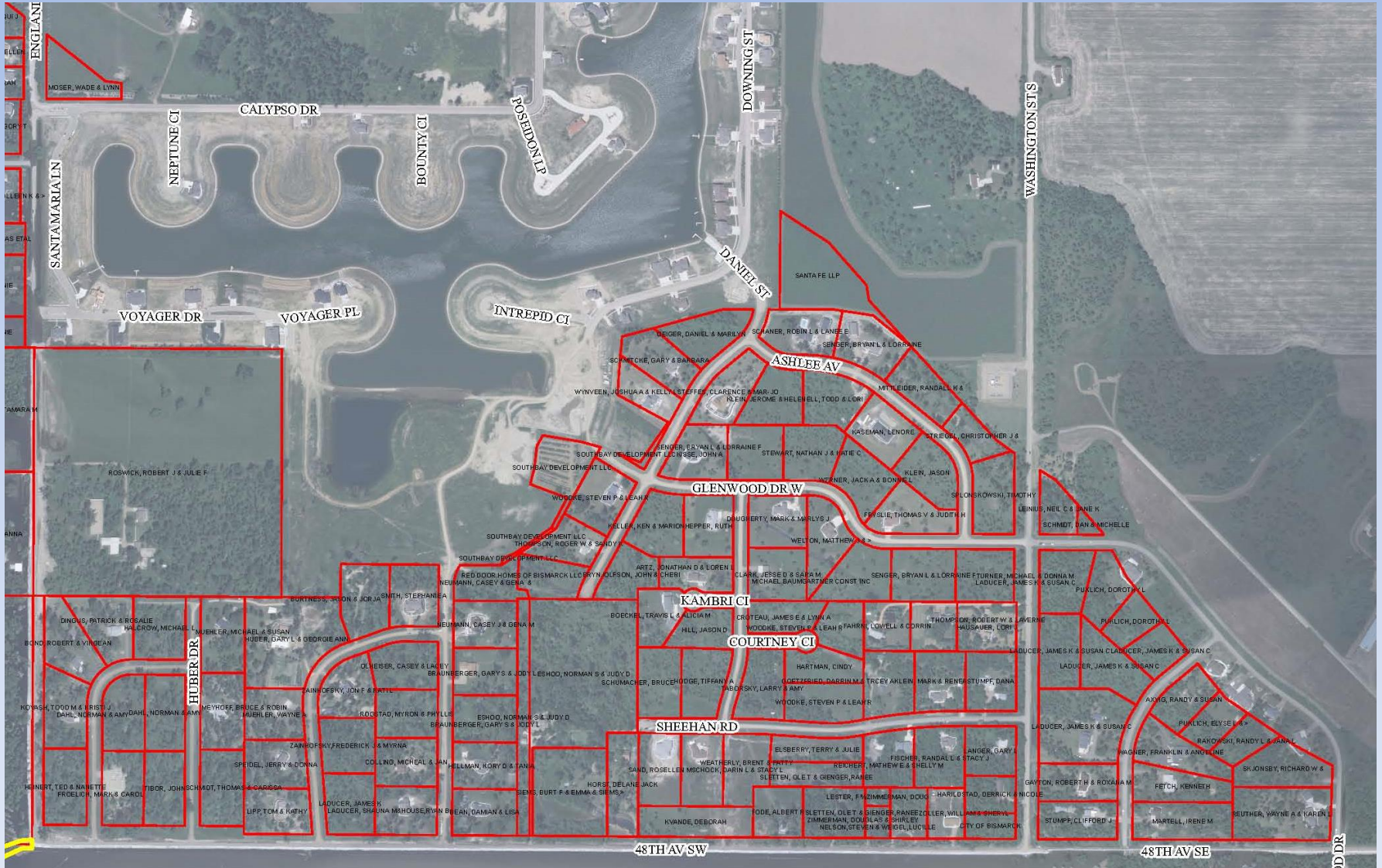
Proposed Project Area Lead Agency

- Highway Department
- Water Resource District
- Other





Protected Parcels (2013 Mailing)



Missouri River Correctional Center Funding Scenario Options 2012

Scenario	Total Cost	SWC	MRCC	Assessed	Assessed/Lot
Combined Project/No Cost Share	\$850,088	\$0	\$160,000	\$690,088	\$4,894
Combined Project/Trail Cost Share	\$850,088	\$198,602	\$160,000	\$491,486	\$3,486
*Combined Project/Both Cost Share	\$850,088	\$355,145	\$160,000	\$334,943	\$2,375
Separate Project/No Cost Share	\$850,088	\$0	\$428,415	\$428,522	\$3,039
Separate Project/Trail Cost Share	\$850,088	\$198,602	\$428,415	\$223,071	\$1,582
Separate Project/Both Cost Shared	\$850,088	\$355,145	\$265,020	\$223,071	\$1,582

**Separate Project => MRCC to pay for Roadway
Assessment District to pay for Trail**